

# **TEAC<sup>®</sup>**

## **SERVICE MANUAL**

---

# **CTF6860S**

68 CM CTV

---

## SPECIFICATION

SUPPLY VOLTAGE : AC220V 50Hz  $\geq +10\%$  /  $-20\%$

SYSTEM :	PAL - I/I	PAL - BG	PAL - I (UK)	PAL - SECAM - BG / DK	PAL - SECAM - BG / DK (HYPER)	PAL - BG (HYPER)	PAL - BG (CATV)	SECAM - L	L'	
CHANNEL L - VHF : H - VHF : UHF :	4 - 13 21 - 69	2 - 4 5 - 12 21 - 69	21 - 69	1 - 5 6 - 12 21 - 69	1 - 5 6 - 12 21 - 69	E2 - S10 E5 - S41 E21 - E69	E2 - S2 E5 - S20 E21 - E69	1 - Q 21 - 69	FB - FC	CH CH CH
VIF FREQUENCY :	38.9	38.9	39.5	38.0	38.9	38.9	38.9	38.9	32.7	MHz
SIF FREQUENCY :	32.9	33.4	33.5	31.5 32.5	32.4 33.4	33.4	33.4	32.4	39.2	MHz
CHROMA IF FREQUENCY :	34.47	34.47	35.07	33.57 33.57	34.47 34.47	34.47	34.47	34.47		MHz
INTER-CARRIER FREQUENCY :	6.0	5.5	6	6.5 5.5	5.5 6.5	5.5	5.5	6.5	6.5	MHz
SCANNING HORIZONTAL : VERTICAL :	15625 LINE 50 Hz									
ANTENNA INPUT IMPEDANCE :	75 OHM									
CRT :	25" 29"									

<u>ITEMS OF MEASUREMENT</u>	<u>STANDARD</u>	<u>UNIT</u>
VIDEO SENS. AT S/N 30db L - VHF	$\leq 57$	dbuv
H - VHF	$\leq 57$	dbuv
UHF	$\leq 60$	dbuv
SOUND SENS. AT S/N 30db L - VHF	$\leq 42$	dbuv
H - VHF	$\leq 42$	dbuv
UHF	$\leq 48$	dbuv
AGC CHARACTER	$\geq 60$	db
SELECTIVITY -1.5 MHz	$\geq 35$	db
+ 8 MHz	$\geq 40$	db
COLOR SENS.	$\leq 45$	dbuv
COLOR LOCK - IN RANGE	$\geq \pm 300$	Hz
VERTICAL LOCK - IN RANGE	$\geq 6$	Hz
HORIZONTAL LOCK - IN RANGE	$\geq 400$	Hz
MAX BRIGHTNESS	$\geq 100$	cd/m <sup>2</sup>
MAX OUTPUT POWER	$\geq 4.5$	W
OUTPUT POWER AT 10% THD	$\geq 3.5$	W
BUZZ	$\leq -40$	db
AFC RANGE	$\geq +1$	MHz
	$\geq -0.5$	MHz
MIN. VOL HUM	$\leq 20$	mV
RESOLUTION HORIZONTAL	$\geq 300$	LINES
VERTICAL	$\geq 400$	LINES
LINEARITY DISTORTION VERTICAL	$\leq 10$	%
HORIZONTAL	$\leq 10$	%
RASTER DISTORTION	$\leq 5$	%
REMOTE CONTROL DISTANCE	$\geq 5$	METER
ANGLE	$\geq \pm 15$	DEGREE
POWER CONSUMPTION ( AT NORMAL CONDITION )	$\leq 120$	WATTS
POWER CONSUMPTION ( AT MAX. CONDITION )	$\leq 150$	WATTS
CONVERGENCE DISLOCATION AT AREA "A"	$\leq 0.4$	%
AREA "B"	$\leq 0.8$	%
( see fig.1 )		

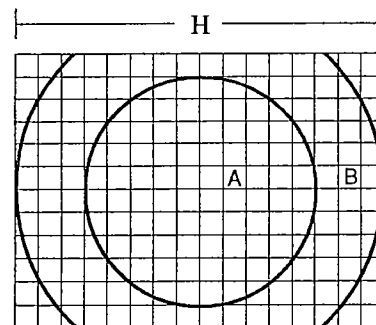


Fig.1

VIDEO INPUT LEVEL : 1.0V P-P  $\pm$  3dB  
 AUDIO INPUT LEVEL : 0.5V RMS  $\pm$  3dB

# ALIGNMENT INSTRUCTION

## II PLEASE READ BEFORE ATTEMPTING SERVICE

1. Never disconnect any leads while receiver is in operation.
2. Disconnect all power before attempting any repairs.
3. Do not short any portion of the circuit while power is on.
4. For safety reasons, all parts replaced should be identical, (for parts and part numbers see parts list).
5. Before alignment the set must be pre-heated for 30 minutes or more and erase magnetism thoroughly from CRT front chassis frame by erase coil. (Except IF, SYNC, COLOR, SECAM, B+, SOUND)

## III TEST EQUIPMENT

- |   |   |
|---|---|
| 1. Colour Bar, Dot, Cross Hatch Generator | 6. High Voltage Meter                   |
| 2. DC Power Supply                        | 7. Ampere Meter (0.5 Class, DC 3mA Max) |
| 3. Oscilloscope                           | 8. Demagnetizing Coil                   |
| 4. Vacuum Tube Voltmeter                  | 9. Philips Pattern Generator            |
| 5. Volt Ohmmeter                          | 10. High Pot Tester                     |

## **III. FACTORY ADJUSTMENT : See table 1- 4**

1. Press REMOTE FACTORY ON button.
2. Press REMOTE FACTORY button.
3. Press REMOTE UP or DOWN button select item.
4. Press REMOTE value (+) (-) button, adjust the value.
5. REMOTE DIALOG CENTRE button can turn off factory mode function.

REMARK : NO this factory on Normal remote control .

## **IV. B+ ADJUSTMENT**

1. Connect a digital voltmeter between the W234 and Ground.
2. Press REMOTE Picture button.
3. Press REMOTE UP/DOWN and value (-) button set Brightness, contrast, color to minimum.
4. Adjust Screen Volume on FBT Until the picture can just be seen.
5. Adjust VR901 and obtain a reading of 143V  $\pm$ 1V (DC).

## **V. AGC ALIGNMENT**

1. Receive CH69 (UHF) and input field strength. (60dB in put signal)
2. Connect a digital voltmeter between the TUNER AGC TERMINAL and Ground.
3. Press REMOTE AGC button.
4. Press REMOTE value (+) (-) button adjust value to (0) and then adjust AGC take over value obtain drop down 0.4V. (DC)

REMARK : ( 1/ The drop down voltage should be more than and tends to 0.4V )  
( 2/ No observable noise can be seen )

## VI. SOUND TRACKING ALIGNMENT

1. Receive a gray scale pattern.
2. Connect an oscilloscope and monitor IC109 PIN 15 and Ground.
3. Adjust T101 to obtain the waveform Fig.6.

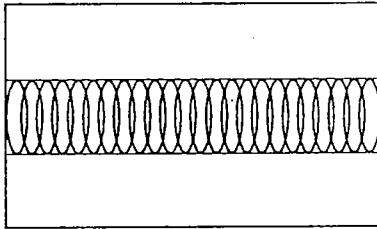


Fig.6

Remark: All frequency of Marker points are  $\pm 0.2\%$  tolerance.

## VII. EAST - WEST CORRECTION ADJUSTMENT

- 1) Receive a crosshatch and center cross pattern.
- 2) Set the Brightness, contrast to middle position.
- 3) Press REMOTE EW-Par/wid, EW-trap button, Press REMOTE VALUE (+) (-) button adjust Value to normal regular picture.
- 4) Press REMOTE WE-width button, Press REMOTE value (+) (-) button adjust value to proper horizontal width ( $90\% \pm 2\%$ )

## VIII. HORIZONTAL SHIFT ADJUSTMENT

1. Receive Monoscope Pattern input signal  $70\text{dB} \pm 10\text{dB}$ .
2. Press REMOTE H-shift button.
3. Press REMOTE value (+) (-) button adjust value to obtain the picture at center  $\pm 2\text{mm}$ .  
(Specification show in Fig.8)

## IX. VERTICAL LINEARITY ADJUSTMENT

- 1) Receive a crosshatch and center cross pattern.
- 2) Set the Brightness, contrast to middle position.
- 3) Press REMOTE V-Slope, S-Correction button, Press REMOTE Value (+) (-) button adjust value to normal regular picture.
- 4) Press REMOTE V-Shift button, Press REMOTE Value (+) (-) button adjust value to obtain the picture at center.

## X. VERTICAL AMPL ADJUSTMENT

1. Receive the Monoscope Pattern.
2. Press REMOTE V-ampl button.
3. Press REMOTE value (+) (-) button adjust value to obtain a normal picture.

## XI. WHITE BALANCE ALIGNMENT STEP

(Degauss the picture by degaussing coil if necessary)

1. Receive a grey scale pattern
2. Connect an oscilloscope and monitor CN101 pin "3" and ground.
3. Press REMOTE picture button.
4. Press REMOTE UP/DOWN and value (-) button set the brightness, contrast, to middle position.
5. Adjust screen voltage on FBT until the waveform to  $2.5\text{V} \pm 0.25\text{V DC}$  see fig.7.
6. Press REMOTE sub bri button.
7. Press REMOTE value (+) (-) button adjust value to (18).
8. Receive a black and white pattern
9. Press REMOTE white bal button.
10. Press REMOTE UP/Down and value (+) (-) button adjust blue str value to (0).
11. Press REMOTE picture button.
12. Press REMOTE UP/Down and Value (+) (-) button set the brightness and color to minimum position.  
contrast to MAX position.
13. Press REMOTE picture r.g.b. button.
14. Press REMOTE UP/Down and value (+) (-) button adjust the white balance. (9300<sup>®</sup>k)

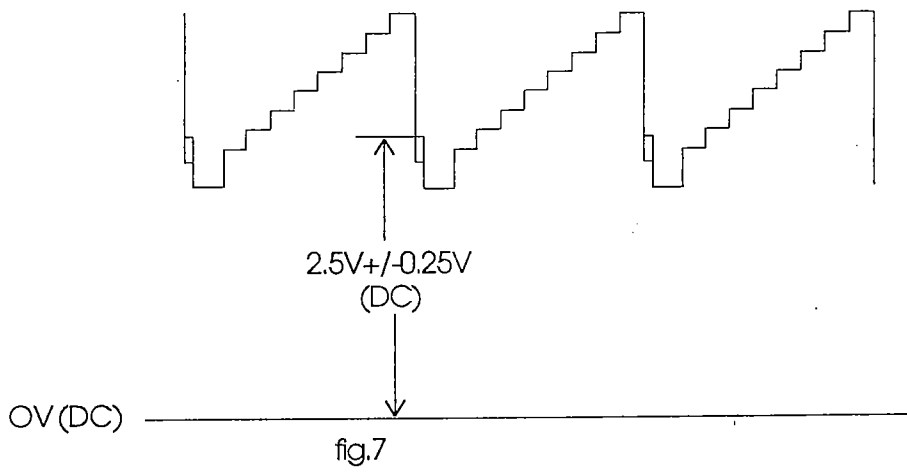


fig.7

## XII.SUB - BRIGHTNESS ALIGNMENT

1. Receive a grey scale pattern.
2. Press REMOTE picture button,.
3. Press REMOTE UP/DOWN and value (-) button set the brightness, contrast to minimum.
4. Press REMOTE sub bright button.
5. Press REMOTE value (+) (-) button adjust value to brightness bar can just be seen.

## XIII. FOCUS ALIGNMENT

- 1) Set the Brightness and Contrast to middle position.
- 2) Receive a monoscope pattern.
- 3) Adjust focus control to obtain sharpest picture.

## XIV. HIGH POT TESTING

- 1) Short the L - pole and N - pole of AC line cord.
- 2) Switch on the power switch of the TV Set.
- 3) Connect The High Pot Tester (-) to L and N pole, (+) to the METAL PART of CABINET.

SAFETY STD. / CONDITION	TEST SYANDARD	TEST STANDARN FOR PRODUCTION
VDE, SAA	3.0KV 10mA / 1MIN	$\geq 3.5$ KV $\leq 10$ mA / $\geq 10$ SEC.
BS	4.0KV 10mA / 1MIN	$\geq 4.0$ KV $\leq 10$ mA / $\geq 10$ SEC.
CHINA STANDARD	3.0KV 10mA / 1MIN	$\geq 3.3$ KV $\leq 5$ mA / $\geq 6$ SEC.
UL	1.0KV 5mA / 1MIN	$\geq 1.25$ KV $\leq 5$ mA / $\geq 1$ SEC.

Remark:

- 1) If no other specify, the strength of input signal should be 70dB  $\pm 10$ dB.
- 2) The High Pot Tester can have  $\leq \pm 5\%$  tolerance.

DISTRICT	CENTRE (mm) POSITION	LIMIT (mm)	SCANNING SIZE (%)	SCANNING SIZE LIMIT (%)
THAILAND	-1	0 ~ -2	90	88 ~ 92
FRANCE	+3	0 ~ +5	90	88 ~ 94
GERMANY	+3	0 ~ +5	90	90 ~ 95
*GROUP A	-2	-5 ~ -1	90	88 ~ 94
*GROUP B	0	-2 ~ +2	90	88 ~ 94
*GROUP C	+3	0 ~ +5	90	88 ~ 94

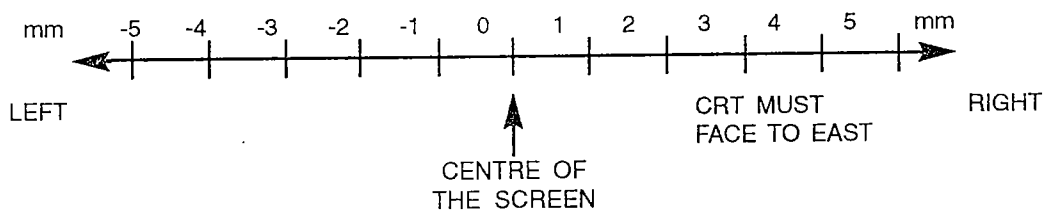


FIG. 8

- REMARK: 1. SUITABLE FOR 14" OR ABOVE TV.
2. Adjust the centre position must take the upper side of monoscope pattern for standard.
3. Group A: AUSTRALIA, NEW ZEALAND, TAHITI.
4. Group B: HONG KONG, CHINA, AMERICA, CANADA, MALAYSIA, MEXICO.
5. Group C: ENGLAND, ITALY, GERMANY, RUSSIA, SWITZERLAND, JUGOSLAVIA, SPANISH.
- If the above countries are not include, please consult to Engineering Dept.



FACTORY MODE TABLE 1

ITEM		REF VALUE	REMARK
1	POWER	P	0 = TV Status S = Power Status P = Last power status
2	TDA884X	3	1=PAL/NTSC.W/O BW                      3=PAL/NTSC.W/BW 2=PAL/SECAM/NTSC.W/O BW          4=PAL/SECAM/NTSC,W/BW
3	S.SYS	6	1 = DK/I                                  4 = BG/DK/I/M 2 = BG/DK                                5 = I 3 = DK/I/M                                6 = BG
4	LOGO	1	1 = NIL 2 = TRAC 3 = HATER
5	CT1	0	0 = OFF 1 = ON
6	OSD.	1	0 = NO BACKGAN 1 = W/BACKGAN
7	WOOFER	0	0 = OFF 1 = ON
8	TELETEXT	1	0 = OFF 1 = ON
9	BLUE STR	0	0 = OFF 1 = ON
10	AV NO	1	1 = TV/AV1/AV2/AV3/S-VHS 2 = TV/AV1/AV2/S-VHS 3 = TV/AV1/AV2
11	KARAOKE	0	0 = OFF 1 = ON
12	BBE	0	0 = OFF 1 = ON
13	HALF SCR	0	0 = Picture 1 = HAF Picture

FACTORY MODE TABLE 2

ITEM		VALUE ADJUST RANGE	REF VALUE	REMARK
1	H-SHIFT	co-ff	dd	For CII ON TV set Adjustmant
		80-Bf	a3	For CII OFF TV set Adjustmant
2	V-SLOPE	0-3f	2b	For TV set Adjustmant
3	V-AMPL	40-80	55	For TV set Adjustment
4	S-CORRECTION	80-Bf	90	For TV set Adjustmant
5	V-SHIFT	0-3f	1e	For TV set Adjustment
6	EW-WIDTH	0-3f	36	For TV set Adjustmant
7	EW-PAR	0-3f	16	For TV set Adjustment
8	EW-CORNER	0-3f	0	For TV set Adjustmant
9	EW-TRAP	0-3f	2a	For TV set Adjustment
10	CONTROL 0		3	NON-Adjustable Value
11	CONTROL 1		90	NON-Adjustable Value
12	AGC	0-3f	12	For TV set Adjust mant
13	PLL		40	For TV Set IF Frequency 40 = 38.90 MHz      80 = 33.40 MHz 60 = 38.00 MHz      CI = 33.90 MHz

FACTORY MODE TABLE 3

ITEM		VALUE ADJUST RANGE	REF VALUE	REMARK
1	CONTROL 2		18	NON-Adjustable value
2	CONTROL 3		6	NON-Adjustable value
3	CONTROL 4		e9	CTI ON Set 9 CTI OFF Set e9
4	HOTEL LOCK		0	0 = OFF 1 = ON
5	SaB SHP	00-31	00	Sab shp setting
6	COMB		0	0 = OFF 1 = ON
7	NICAM		0	0 = NICAM/G.ST 2 = G.ST 1 = NICAM
8	CCD		0	0 = OFF 1 = ON

FACTORY MODE TABLE 4

ITEM		VALUE ADJUST RANGE	REF VALUE	REMARK
1	PT R	0-3f	22	For TV Set Adjustmant
2	PT G	0-3f	22	For TV Set Adjustmant
3	PT B	0-3f	22	For TV Set Adjustmant
4	WHITE BAL		0	0 = Picture 1 = H-LINE
5	SUB BRI	00-31	18	Sub bri Sating

LOCATION	T R	B.V	C.V	E.V				
Q101		0.7	0	1.6				
Q102		4.9	0.3	4.9				
Q103		4.9	0.15	4.9				
Q104		4.3	4.9	4.9				
Q105		3.2	0	3.2				
Q106		2.4	7.9	1.7				
Q108		2.8	6.7	2.1				
Q109		1	7	0.3				
Q110		0.7	0	1.4				
Q111		7.7	0	7.9				
Q113		4.3	4.8	4.9				
Q114		4.9	4.9	4.6				
Q115		0	4.9	0				
Q116		4.8	0	4.9				
Q117		0.7	0.5	0				
Q118		0	8.1	0				
Q119		0.6	0	0				
Q301		2.8	2.8	2.8				
Q401		13.6	0	14.3				
Q402		0.6	13.8	0				
Q403		0	115	0				
Q404		0.4	76	0				
Q405		21.6	21	21				
Q701		0	10	0				
Q909		-2.35	293	0				
Q910		0	8.6	0				
Q911		10.2	0	1.3				
Q912		8.9	14	8.2				
Q913		15.3	15.3	14.6				
Q914		14.7	15.3	15.3				

PIN NO	SYMBOL	IC101/V	IC102/V	IC103/V	IC104/V	IC105/V	IC106/V	IC107/V
1		NC	0.7	GND	0	5	GND	NC
2		NC	0.7	NC	0	5	GND	NC
3		NC	0	GND	0	5	GND	GND
4		NC	0	GND	0	5	GND	4.2
5		2.6	4.7	4.8	0	5	5	4.2
6		2.1	0	4.8	0	5	5	GND
7		4.3	0.3	4.8	0	5	5	3.9
8		4.3	NC	4.5	0	5	5	2.6
9		6.6	NC		0	GND		0
10		1.1	4.5		0	GND		2.3
11		3.7	NC		0	GND		2.3
12		7.8	NC		0	GND		2.3
13		3.5	NC		0	GND		GND
14		GND	4.7		0	5		GND
15		NC	NC		0	5		4.9
16		3.9	4.1		0	5		4.9
17		3.3	0		0	GND		GND
18		6.5	GND		0	GND		1.9
19		3.1	2.2		0	GND		1.9
20		2.7	1.8		5	5		NC
21		2.5	GND			GND		NC
22		3.6	4.8			GND		NC
23		3.5	3.5			2.4		NC
24		3.5	3.5			GND		NC
25		3.5	4.6			2.1		NC
26		0.2	NC			2.5		NC
27		2.1	NC			0		NC
28		2.1	NC			GND		GND
29		2.4	4.7			NC		2.3
30		2.4	4.7			5		GND
31		2.4	4.3			2.5		2.3
32		2.4	4.3			0		2.3
33		4.2	4.7			0		NC
34		2.5	4.3			0		NC
35		2.5	NC			0		GND
36		4.3	NC			0.8		NC
37		7.9	4.7			0.8		NC
38		1.9	0			5		4.4
39		4.9	0			5		4.4
40		0.3	0			GND		GND
41		0.7	0			2.4		GND
42		4	0			2.7		GND
43		3.8				0		GND
44		GND				5		GND
45		0.5				GND		GND
46		2.4				GND		2.2
47		2.6				GND		2.3
48		4.6				GND		2.3
49		4.6				4.3		GND
50		2.2				4.3		GND
51		3.8				5		NC
52		3.8				5		NC
53		3.4						2.4
54		4.6						2.4
55		2.9						2.4
56		3.7						0
57								NC
58								NC
59								4.8
60								2.3
61								2.3
62								2.4
63								2.4
64								4.9

PIN NO	SYMBOL	IC108/V	IC109/V	IC301/V	IC401/V	IC402/V	IC403/V	IC404/V
1		10.5	1.8	0	0.7	14.6	13.7	11.8
2		15.4	2.1	0	8.3	GND	GND	GND
3		10.5	2.5	0	11.5	8	5	5
4		10.4	1.8	4.8	15.6			
5		GND	1.8	0.7	8.1			
6		10.4	1.9	GND	GND			
7		21	1.9	2	44			
8		10.5	1.8	1.6	GND			
9		10.5	1.8	1	8.4			
10			3.9	1.2	15.6			
11			3.9	GND	1.2			
12			3	4.8	1.2			
13			NC	1	7			
14			2.8	4.2				
15			1.8	4.2				
16			2.8	1				
17			NC	0				
18			GND	0				
19			4.9					
20			1.8					
21								
22								
23								
24								
25								
26								
27								
28								
29								
30								
31								
32								
33								
34								
35								
36								
37								
38								
39								
40								
41								
42								
43								
44								
45								
46								
47								
48								
49								
50								
51								
52								
53								
54								
55								
56								
57								
58								
59								
60								
61								
62								
63								
64								

PIN NO	SYMBOL	IC501/V	IC01/V	IC701/V					
1		3.2	7.5	2.9					
2		3.3	3.8	0					
3		3.1	NC	2.9					
4		GND	NC	2.9					
5		6.4	NC	2.9					
6		196	5.7	2.9					
7		91	5.7	2.9					
8		82	5.7	2.9					
9		88	5.7	2.9					
10			5.7	2.9					
11			5.7	0					
12			GND	0					
13			5.7	0					
14			5.7	0					
15			5.7	3					
16			5.7	2.9					
17			10	1.47					
18			10	0					
19			GND	0					
20			4.2	0					
21			4.2						
22			10						
23			10						
24			5.7						
25			5.7						
26			NC						
27			5.7						
28			NC						
29			10						
30			4.3						
31			4.5						
32			4.3						
33			4.5						
34			NC						
35			NC						
36			NC						
37									
38									
39									
40									
41									
42									
43									
44									
45									
46									
47									
48									
49									
50									
51									
52									
53									
54									
55									
56									
57									
58									
59									
60									
61									
62									
63									
64									



PART NUMBER DESCRIPTION QTY LOCATION

155-R83303-02-14	REMOTE CONTROL ASSY RC-830		
107-800455-4G	RESONATOR 455 KHZ ET455Z PO TUNG	1	CF701
113-109005-17	CARBON FILM RESISTOR 1 OHM 1/16W +-5%	2	R701,703
113-221005-17	CARBON FILM RESISTOR 220 OHM 1/16W +-5%	1	R702
123-151350-93	CERAMIC CAP. 150 PF 50V +-10% (NPO)	2	C701,702
127-105072-06	ELECT CAP. 1 MFD 50V +-20% {TAPING TYPE}	1	C703
130-134148-01	SILICON DIODE IN4148	3	D702-704
130-600101-0G	INFRARED EMITTER EL-1L1 KODENS HI "GUAN	1	LED701
131-231815-0A	TRANSISTOR 2SC1815 TOSHIBA {TAPING}	1	Q701
133-803428-12	I.C. M34280M1 MITSUBISHI	1	IC701
172-726000-99	BARE WIRE 54MM	0.11	W701
190-R83301-02	REMOTE P.C.B. (270499 REV.1)	1	
514-200407-10	SELF-TAPPING SCREW 2 X 7 B/T (HARDEN)	1	FOR HANDSET
774-002001-00	BATTERY SPRING +VE & -VE	1	
774-R83301-00	BATTERY SPRING (-VE)	1	
774-R83302-00	BATTERY SPRING (+VE)	1	
810-041104-13	POLYBAG 4" X 11" X 0.04MM W/RE-CYCLING MA	1	FOR HANDSET
849-R83301-08	RUBBER KEY PAD - ENG STD {FOR MTSUBISHI	1	
900-R83301-75	REMOTE TOP CAB. - SILVER 1008K SPRAYED	1	
902-R83301-10	HANDSET REAR CAB - 1008K SILVER SPRAYED	1	
910-R83301-12	BATTERY DOOR - 1008K SILVER SPRAYED	1	
919-R83310-27	R/TOP DOOR - TEAC DESIGN {RC-830}	1	
003-131315-0E	TUNER 38.9 MHZ(WSP HYPER 5V) UV1315 PHIL	1	TUNER
105-109103-08	FIXED INDUCTIVE COIL 1.0UH +-10% (WITTIS)	2	(L601,602 ON FUNCTION PC
107-731500-01	SAW FILTER 33.4 MHZ B5308 "NANYANG"	1	SAW102
107-738915-00	SAW FILTER 38.9 MHZ TSF5315 SANYO	1	SAW101
113-101005-17	CARBON FILM RESISTOR 100 OHM 1/16W +-5%	3	R330,331,332
113-103005-17	CARBON FILM RESISTOR 10K OHM 1/16W +-5%	1	R336
113-122005-17	CARBON FILM RESISTOR 1.2K OHM 1/16W +-5%	1	R334
113-220305-75	METAL OXIDE FILM RESISTOR 22 OHM 1W +-5%	1	R337
113-221005-17	CARBON FILM RESISTOR 220 OHM 1/16W +-5%	1	R335
113-391005-17	CARBON FILM RESISTOR 390 OHM 1/16W +-5%	2	(R606,607 ON FUNCTION PC
113-393005-17	CARBON FILM RESISTOR 39K OHM 1/16W +-5%	1	R333
123-101350-60	CERAMIC CAP. 100 PF 50V +-10% (SL TYPE) "SM	2	C333,334
123-103370-90	CERAMIC CAP. 0.01 MFD 50V +80 -20%	2	(C601,602 ON FUNCTION PC
123-104270-90	CERAMIC CAP. 0.1 MFD 25V +80 -20%	2	C337,338
123-271350-60	CERAMIC CAP. 270 PF 50V +-10% (SL TYPE)	2	C330,331
123-331350-60	CERAMIC CAP. 330 PF 50V +-10% (SL TYPE)	1	C332
126-104071-01	MYLAR CAP. 0.1 MFD 50V +-10% ***AUDIO NOT	1	C340
126-224071-01	MYLAR CAP 0.22 MFD 50V +-10%	1	C339
127-226042-06	ELECT CAP. 22 MFD 16V +-20% {TAPING TYPE}	1	C341
127-475102-26	ELECT CAP. BIPOLAR 4.7 MFD 100V +-20% {TAP	2	FROM MAIN SPK. '+' TO TWI
130-410120-01	ZENER DIODE 12V 1/2W +-5% {TAPING} "TEMIC	1	ZD330
133-104565-33	I.C. TDA4565 PHILIPS	1	IC330
133-108843-33	I.C. TDA8843 PHILIPS	1	IC101
160-102255-27	PIN CONNECTOR 2 PINS PLUG STRAIGHT (UL)	4	CN333,335,(CN601,602 ON F
160-104255-27	PIN CONNECTOR 4 PINS PLUG (SHS)	1	CN334
161-121402-00	MINI JACK #HSJ0914-01-040 (HOSIDEN)	1	(EP601 ON FUNCTION PCB)
161-470003-00	RCA JACK HYJ-032-03BY YELLOW (ANGLE) "MI	1	J010 FOR FUNCTION BOARD
161-470015-06	RCA JACK 2 PIN WHITE RIGHT ANGEL "SHENZI	1	J011 FOR FUNCTION BOARD
161-473204-01	3 PIN RCA JACK (RED) ANGLE HIJ-032-03AR "U	1	J012 FOR FUNCTION BOARD
166-181913-40	TWETTER SPEAKER 1" X 3" 8 OHM 10W "TCL"	2	
166-281936-4H	SPEAKER 3" X 6" 8 OHM 10W (YDT 816-3B-SP) "	2	
172-626045-43	UL 1007 TOP COAT WIRE AWG 26 450MM ORAN	2	FROM MAIN SPK. '+' TO TWI
172-626045-43	UL 1007 TOP COAT WIRE AWG 26 450MM ORAN	0	(SERIAL TWEETOR CAP.)
172-626045-44	UL 1007 TOP COAT WIRE AWG 26 450MM YELL	2	FROM MAIN SPK. '-' TO TWE

PART NUMBER DESCRIPTION QTY LOCATION

172-726000-99	BARE WIRE 54MM	0.5	W279,287,288,290,291,292,30
172-726000-99	BARE WIRE 54MM	0.05	(R608 ON FUNCTION PCB)
186-223500-15	HI-WATT REGULAR STANDARD 2A R6P VINYL J	2	
190-932900-20	CTI P.C.B. (020200)	1	
191-200056-10	2 PIN SOCKET ASS'Y L=560MM	1	FROM MAIN PCB CN107 TO
191-200056-10	2 PIN SOCKET ASS'Y L=560MM	0	'2'TO'H'
191-201006-10	2 PIN SOCKET ASS'Y L=700MM	1	CN601 TO RIGHT SPK. PIN`
191-201006-10	2 PIN SOCKET ASS'Y L=700MM	1	CN602 TO LEFT SPK. PIN`1'
191-201231-10	2 PIN FLAT CABLE L=140MM AWG26 (1 SIDE SC	1	FROM MAIN PCB CN333 TO
191-201231-10	2 PIN FLAT CABLE L=140MM AWG26 (1 SIDE SC	0	'2'TO`2'
191-201238-10	2 PIN FLAT CABLE L=240MM #26 (1 SIDE SOCKE	1	FROM MAIN PCB CN335 TO
191-201238-10	2 PIN FLAT CABLE L=240MM #26 (1 SIDE SOCKE	0	'2'TO`2'
191-301005-10	3 PIN SOCKET ASS'Y (2 WIRE) L=560MM	1	FROM MAIN PCB CN106 TO
191-301005-10	3 PIN SOCKET ASS'Y (2 WIRE) L=560MM	0	'2'TO`G'
191-401005-10	4 PIN SOCKET ASS'Y L=450MM	1	FOR CRT
191-401240-10	4 PIN FLAT CABLE 120MM #28 UL 20080 1 SIDE	1	FROM MAIN PCB CN334 TO
191-401240-10	4 PIN FLAT CABLE 120MM #28 UL 20080 1 SIDE	0	'2'TO`2', `3'TO`3', `4'TO`4'
515-303408-10	SELF-TAPPING SCREW 3 X 8 W/B/T (HARDEN)	4	FOR FRONT CAB. TO BASE
515-303410-10	SELF-TAPPING SCREW 3 X 10 W/B/T (HARDEN)	10	8 FOR TWEETOR SPK. MTG
516-300220-10	SELF-TAPPING SCREW 3 X 20 P/A	6	FOR FRONT CAB. TO BASE
610-382941-01	GIFT BOX - TEAC DESIGN {CT-F6860S} {H3A3A3	1	
663-230160-1A	SERIAL NO.LABEL - TEAC DESIGN	4	*(FOR 1ST LOT ONLY)*
663-230160-1B	SERIAL NO.LABEL - TEAC DESIGN	4	*(FOR 2ND LOT ONLY)*
669-382901-08	RATING LABEL - TEAC DESIGN {CT-F6860S} {24	1	
670-382900-37	I/MANUAL - TEAC DESIGN {CT-F6860S} {220P.}	1	
678-382901-14	SCREEN STICKER - TEAC DESIGN {CT-F6860S}	1	
678-868A01-31	TOTAL CARE LABEL - TEAC (E) DESIGN (MC-D4	1	
690-931339-02	WARRANTY CARD- TEAC (D) DESIGN	1	
693-382901-08	EAN CODE LABEL - 9325073003354 {TEAC DESI	1	
710-932901-01	NAME PLATE - TEAC (B) DESIGN (BIG SIZE) (EL	1	
800-382905-00	POLYFOAM TOP - LEFT FOR LITTLE CARTON	1	
800-382906-00	POLYFOAM TOP - RIGHT FOR LITTLE CARTON	1	
800-382927-00	POLYFOAM BOTTOM - LEFT (B) FOR LITTLE CA	1	
800-382928-00	POLYFOAM BOTTOM - RIGHT (B) FOR LITTLE C	1	
810-052204-14	POLYBAG 5" X 22" X 0.04MM W/RE-CYCLING MA	1	FOR AC LINE CORD
810-091504-13	POLYBAG 9" X 15" X 0.04MM W/ RE-CYCLING P.	1	FOR I/MANUAL
810-505504-1B	POLYBAG 50"X55"X0.04MM PE MAT. TEAC DES	1	FOR UNIT
826-432005-00	FOAM SHEET - 43" X 20" X 0.5MM THK	1	FOR UNIT TOP
826-503005-00	FOAM SHEET 50" X 30" X 0.5MM THK (APPROX)	1	FOR UNIT BOTTOM
884-382930-06	PRESET PLATE (B) - TEAC DESIGN {CT-F6860S}	1	
884-733A74-02	JACK COVER - TEAC DESIGN {CT-F6860S}	1	
900-382921-06	FRONT CAB. (B) - SILVER 1008K W/GREY 433C	1	
902-282903-U1	REAR CABINET - MATT BLACK MOULDED (UL)	1	
919-382913-05	PRESET DOOR (B) - TEAC DESIGN {CT-F6860S}	1	
930-382913-04	BASE COVER (B) - SILVER 1008K SPRAYED	1	
948-882008-00	DOOR LOCKER PR-4B "HUIZHOU LONGCHENG	1	
980-733A04-U0	JACK PLATE-BLK W/BRASS INSERT 521-882001	1	
991-382911-04	POWER KNOB (B) - SILVER 1008K SPRAYED	1	
002-129053-18	29" CRT #A68QCU259X53 {PURE FLAT} "LG"	1	#
008-900291-04	DEGAUSSING COIL 90T (W/FIVE LA YERS OF T,	1	# L903
171-550084-B0	7" SAA APP LINE CORD 2-PIN PLUG	0	#
171-550084-D0	84" AC LINE CORD W/SAA APP. 10A 250V	1	#
171-550084-D1	7' SAA APP. LINE CORD W/PLUG E-CUTTING 45	0	#
012-102340-0B	SEMI-FIXED RES. WI06-2AL-1K "SHENZHEN YU	1	VR901
101-160984-94	STANDBY SWITCHING TRANSFORMER KB16E9	1	T970
101-191009-96	HORIZONTAL DRIVE TRANSFORMER (R1009)	1	T401

PART NUMBER DESCRIPTION QTY LOCATION

102-370600-0B	TANK COIL / AFC COIL 707851 "DONGGUAN LIH	1	T101
105-100103-16	FIXED INDUCTIVE COIL 10UH 10% AL0305-100K	6	L101-103,105,109,110
105-109101-02	FIXED INDUTIVE COIL 1.0 uH 10%	5	R252,253,W151,152,L201
105-109103-08	FIXED INDUCTIVE COIL 1.0UH +-10% (WITTIS)	2	R236,237
105-180103-08	FIXED INDUCTIVE COIL 18 UH +-10% 0410 "WIT	1	L106
105-201106-02	CHOKE COIL 200UH 10% CH9012- 201K (ELEC P	3	L403,904,W255
105-500052-06	LINEARITY COI 50UH LX141242B "HIGHLIGHT"	1	L401
105-689103-16	FIXED INDUCTIVE COIL 6.8UH 10% AL0305-6R8	1	L104
105-821156-06	CHOKE COIL 820UH 0.37 OHM HIGHLIGHT	1	L402
106-210048-01	RELAY 48V VS48MB "TAKAMISAWA"	1	RLY902
107-105500-66	SOUND TRAP CERAMIC FILTER 5.5MHZ WEI HA	1	CF101
113-100105-17	CARBON FILM RESISTOR 10 OHM 1/4W +-5%	2	R238,242
113-100505-75	METAL OXIDE FILM RESISTOR 10 OHM 3W +-5%	1	R422
113-100605-75	METAL OXIDE FILM RESISTOR 10 OHM 5W +-5%	1	R427
113-101005-17	CARBON FILM RESISTOR 100 OHM 1/16W +-5%	5	R123,141,173,174,180
113-101005-17	CARBON FILM RESISTOR 100 OHM 1/16W +-5%	6	R201,202,207,239,240,247
113-101005-17	CARBON FILM RESISTOR 100 OHM 1/16W +-5%	22	R06-23,38,39,160
113-101105-17	CARBON FILM RESISTOR 100 OHM 1/4W +-5%	5	R501-503,938,975
113-101305-75	METAL OXIDE FILM RESISTOR 100 OHM 1W +-5%	1	R939
113-102005-17	CARBON FILM RESISTOR 1K OHM 1/16W +-5%	13	R101,140,148,161,166,188,19
113-102005-17	CARBON FILM RESISTOR 1K OHM 1/16W +-5%	10	R243,244,245,249,250,267,26
113-102005-17	CARBON FILM RESISTOR 1K OHM 1/16W +-5%	2	(R601,602 ON FUNCTION P.C
113-102105-17	CARBON FILM RESISTOR 1K OHM 1/4W +-5%	2	R510,973
113-102205-12	CARBON FILM RESISTOR 1K OHM 1/2W +-5%	3	R505,506,507
113-102305-75	METAL OXIDE FILM RESISTOR 1K OHM 1W +-5%	1	R410
113-103005-17	CARBON FILM RESISTOR 10K OHM 1/16W +-5%	7	R121,182,187,189,251,05,185
113-103101-67	METAL FILM RESISTOR 10K OHM 1/4W +-1%	1	R113
113-103105-17	CARBON FILM RESISTOR 10K OHM 1/4W +-5%	2	R905,514
113-104005-17	CARBON FILM RESISTOR 100K OHM 1/16W +-5%	1	R142
113-104305-75	METAL OXIDE FILM RESISTOR 100K OHM 1W +	1	R918
113-109105-17	CARBON FILM RESISTOR 1 OHM 1/4W +-5%	2	R235,406
113-109205-12	CARBON FILM RESISTOR 1 OHM 1/2W +-5%	2	R407,408
113-120305-75	METAL OXIDE FILM RESISTOR 12 OHM 1W +-5%	1	R909
113-120405-75	METAL OXIDE FILM RESISTOR 12 OHM 2W +-5%	1	R917
113-120505-75	METAL OXIDE FILM RESISTOR 12 OHM 3W +-5%	1	R423
113-121005-17	CARBON FILM RESISTOR 120 OHM 1/16W +-5%	1	R153
113-122005-17	CARBON FILM RESISTOR 1.2K OHM 1/16W +-5%	1	R269
113-122105-17	CARBON FILM RESISTOR 1.2K OHM 1/4W +-5%	1	R976
113-123005-17	CARBON FILM RESISTOR 12K OHM 1/16W +-5%	1	R203
113-123105-17	CARBON FILM RESISTOR 12K OHM 1/4W +-5%	1	R974
113-123405-75	METAL OXIDE FILM RESISTOR 12K OHM 2W +-5%	2	R970,971
113-124005-17	CARBON FILM RESISTOR 120K OHM 1/16W +-5%	1	R413
113-129105-17	CARBON FILM RESISTOR 1.2 OHM 1/4W +-5%	1	R248
113-151005-17	CARBON FILM RESISTOR 150 OHM 1/16W +-5%	1	W223
113-151305-75	METAL OXIDE FILM RESISTOR 150 OHM 1W +-5%	1	R522
113-152005-17	CARBON FILM RESISTOR 1.5K OHM 1/16W +-5%	2	R171,405
113-152105-17	CARBON FILM RESISTOR 1.5K OHM 1/4W +-5%	2	R516,517
113-152205-12	CARBON FILM RESISTOR 1K5 OHM 1/2W +-5%	2	R508,429
113-153005-17	CARBON FILM RESISTOR 15K OHM 1/16W +-5%	2	R134,401
113-153405-75	METAL OXIDE FILM RESISTOR 15K OHM 2W +-5%	1	R418
113-158405-75	METAL OXIDE FILM RESISTOR 0.15 OHM 2W +	1	R912
113-159405-75	METAL OXIDE FILM RESISTOR 1.5 OHM 2W +-5%	1	R509
113-159905-51	WIRE WOUND CEMENT RESISTOR 1.5 OHM 10	1	R924
113-181005-17	CARBON FILM RESISTOR 180 OHM 1/16W +-5%	1	R150
113-182105-17	CARBON FILM RESISTOR 1.8K OHM 1/4W +-5%	1	R904
113-220205-12	CARBON FILM RESISTOR 22 OHM 1/2W +-5%	1	R417

PART NUMBER DESCRIPTION QTY LOCATION

113-221005-17	CARBON FILM RESISTOR 220 OHM 1/16W +-5%	2	R179,129
113-222005-17	CARBON FILM RESISTOR 2.2K OHM 1/16W +-5%	3	R419,186,206
113-222105-17	CARBON FILM RESISTOR 2.2K OHM 1/4W +-5%	1	R518
113-222205-12	CARBON FILM RESISTOR 2.2K OHM 1/2W +-5%	1	R523
113-223005-17	CARBON FILM RESISTOR 22K OHM 1/16W +-5%	7	R107-112,420
113-223101-67	METAL FILM RESISTOR 22K OHM 1/4W +-1%	1	R105
113-223105-17	CARBON FILM RESISTOR 22K OHM 1/4W +-5%	3	R103,104,972
113-224005-17	CARBON FILM RESISTOR 220K OHM 1/16W +-5%	1	R127
113-224105-17	CARBON FILM RESISTOR 220K OHM 1/4W +-5%	1	R102
113-229605-51	WIRE WOUND CEMENT RESISTOR 2.2 OHM 5W	1	R944
113-243105-17	CARBON FILM RESISTOR 24K OHM 1/4W +-5%	1	R979
113-270405-75	METAL OXIDE FILM RESISTOR 27 OHM 2W +-5%	1	R910
113-270605-75	METAL OXIDE FILM RESISTOR 27 OHM 5W	1	R980
113-271005-17	CARBON FILM RESISTOR 270 OHM 1/16 W +-5%	2	R241,414
113-272005-17	CARBON FILM RESISTOR 2.7K OHM 1/16W +-5%	1	(R603 ON FUNCTION PCB)
113-272205-12	CARBON FILM RESISTOR 2.7K OHM 1/2W +-5%	1	R415
113-273005-17	CARBON FILM RESISTOR 27K OHM 1/16W +-5%	3	R119,258,135
113-331005-17	CARBON FILM RESISTOR 330 OHM 1/16W +-5%	4	R156,157,271,155
113-331105-17	CARBON FILM RESISTOR 330 OHM 1/4W +-5%	1	R901
113-332005-17	CARBON FILM RESISTOR 3.3K OHM 1/16W +-5%	7	R130-131,136,139,204,205,40
113-332102-17	CARBON FILM RESISTOR 3.3K OHM 1/4W +-2%	1	R907
113-332905-58	WIRE WOUND CEMENT RESISTOR 3K3 OHM 10W	1	R416
113-333005-17	CARBON FILM RESISTOR 33K OHM 1/16W +-5%	2	R183,184
113-334105-17	CARBON FILM RESISTOR 330K OHM 1/4W +-5%	1	R981
113-334305-75	METAL OXIDE FILM RESISTOR 330K OHM 1W +-5%	1	R911
113-335105-17	CARBON FILM RESISTOR 3.3M OHM 1/4W +-5%	1	R977
113-339105-17	CARBON FILM RESISTOR 3.3 OHM 1/4W +- 5%	1	R978
113-339405-75	METAL OXIDE FILM RESISTOR 3.3 OHM 2W +-5%	1	R411
113-390405-75	METAL OXIDE FILM RESISTOR 39 OHM 2W +-5%	1	R428
113-390405-75	METAL OXIDE FILM RESISTOR 39 OHM 2W +-5%	1	R01
113-390605-75	METAL OXIDE FILM RESISTOR 39 OHM 5W +-5%	1	R913
113-391005-17	CARBON FILM RESISTOR 390 OHM 1/16W +-5%	1	R147
113-392005-17	CARBON FILM RESISTOR 3.9K OHM 1/16W +-5%	2	R115,128
113-393005-17	CARBON FILM RESISTOR 39K OHM 1/16W +-5%	1	R190
113-3938J1-67	METAL FILM RESISTOR 39K OHM 1/8W +-1%	1	R143
113-399405-75	METAL OXIDE FILM RESISTOR 3.9 OHM 2W +-5%	1	R432
113-470005-17	CARBON FILM RESISTOR 47 OHM 1/16W +-5%	2	R149,W128
113-470205-75	METAL OXIDE FILM RESISTOR 47 OHM 1/2W +-5%	1	R504
113-471005-17	CARBON FILM RESISTOR 470 OHM 1/16W +-5%	1	R412,163,164,165
113-471105-17	CARBON FILM RESISTOR 470 OHM 1/4W +-5%	2	R519,520
113-471305-75	METAL OXIDE FILM RESISTOR 470 OHM 1W +-5%	1	R404
113-472005-17	CARBON FILM RESISTOR 4.7K OHM 1/16W +-5%	9	R132,133,176,177,178,192,19
113-472005-17	CARBON FILM RESISTOR 4.7K OHM 1/16W +-5%	6	R226,228,254,255,256,257
113-472005-17	CARBON FILM RESISTOR 4.7K OHM 1/16W +-5%	5	R265,266,02,03,(R604 ON FU
113-472105-17	CARBON FILM RESISTOR 4.7K OHM 1/4W +-5%	1	R908
113-473005-17	CARBON FILM RESISTOR 47K OHM 1/16W +-5%	9	R270,25,26,28,29,31,32,34,35
113-479105-17	CARBON FILM RESISTOR 4.7 OHM 1/4W +-5%	1	R406
113-560005-17	CARBON FILM RESISTOR 56 OHM 1/16W +-5%	1	R151
113-561005-17	CARBON FILM RESISTOR 560 OHM 1/16W +-5%	4	R261-263,285
113-562105-17	CARBON FILM RESISTOR 5.6K OHM 1/4W +-5%	1	R434
113-680405-75	METAL OXIDE RESISTOR 68 OHM 2W +-5%	1	R122
113-681005-17	CARBON FILM RESISTOR 680 OHM 1/16W +-5%	1	R116
113-682005-17	CARBON FILM RESISTOR 6.8K OHM 1/16W +-5%	1	R124
113-682102-17	CARBON FILM RESISTOR 6.8K OHM 1/4W +-2%	1	R902
113-682105-17	CARBON FILM RESISTOR 6.8K OHM 1/4W +-5%	1	R906
113-683005-17	CARBON FILM RESISTOR 68K OHM 1/16W +-5%	1	R117

PART NUMBER DESCRIPTION QTY LOCATION

113-684005-17	CARBON FILM RESISTOR 680K OHM 1/16W +-5%	1	R409
113-688405-42	FUSEBLE RESISTOR 0.68 2W +-5%	2	R914,937
113-750005-17	CARBON FILM RESISTOR 75 OHM 1/16W +-5%	10	R24,27,30,33,36,37,172,167,1
113-821005-17	CARBON FILM RESISTOR 820 OHM 1/16W +-5%	2	R195,(R605 ON FUNCTION P
113-822005-17	CARBON FILM RESISTOR 8.2K OHM 1/16W +-5%	2	R125,126
113-822105-17	CARBON FILM RESISTOR 8.2K OHM 1/4W +-5%	1	R903
113-823005-17	CARBON FILM RESISTOR 82K OHM 1/16W +-5%	1	R120
113-824005-17	CARBON FILM RESISTOR 820K OHM 1/16W +-5%	1	R118
113-829105-17	CARBON FILM RESISTOR 8.2 OHM 1/4W +-5%	1	R260
123-101350-60	CERAMIC CAP. 100 PF 50V +-10% (SL TYPE) "SM	4	C102,196-198
123-102350-90	CERAMIC CAP. 0.001 MFD 50V +-10% (B TYPE)	6	C101,117,120,125,149,417
123-102850-10	CERAMIC CAP. 0.001 MFD 2KV +-10% MATSUSH	1	C504
123-103370-90	CERAMIC CAP. 0.01 MFD 50V +80 -20%	13	C126,188,189,405,06,18,19,2
123-104270-90	CERAMIC CAP. 0.1 MFD 25V +80 -20%	5	C139,141,202,205,225
123-104270-90	CERAMIC CAP. 0.1 MFD 25V +80 -20%	8	C232,432,236,145,146,151,15
123-122550-95	CERAMIC CAP. 1200PF 500V +-10% "YINAN DON	1	C418
123-150340-93	CERAMIC CAP. 15 PF 50V +-5% (NPO)	3	C160,161,138
123-151350-60	CERAMIC CAP 150 PF 50V +-10% (SL TYPE)	1	C204
123-152850-10	CERAMIC CAP. 0.0015 MFD 2KV +-10% MATSUS	1	C434
123-180340-93	CERAMIC CAP. 18 PF 50V +-5% (NPO)	1	C137
123-182850-10	CERAMIC CAP. 0.0018 MFD 2KV +-10% MATSUS	1	C436
123-220340-60	CERAMIC CAP. 22 PF 50V +-5% (SL TYPE)	2	C203,206
123-222350-90	CERAMIC CAP. 0.0022 MFD 50V +-10% (B TYPE)	5	C119,124,133,144,168
123-222850-10	CERAMIC CAP. 0.0022 MFD 2KV +-10% MATSUS	1	C912
123-223370-90	CERAMIC CAP. 0.022 MFD 50V +80 -20%	8	C121,147,163,221,229,02,974
123-270340-60	CERAMIC CAP. 27 PF 50V +-5% (SL-TYPE)	4	C171,172,173,226
123-270340-93	CERAMIC CAP. 27PF 50V +-5% (NPO)	2	C164,165
123-271350-60	CERAMIC CAP. 270 PF 50V +-10% (SL TYPE)	1	C123
123-272850-10	CERAMIC CAP. 0.0027 2KV	2	C503,914
123-360340-93	CERAMIC CAP. 36 PF 50V +-5% (NPO)	2	C406,407
123-470340-93	CERAMIC CAP. 47 PF 50V +-5% (NPO)	1	C170
123-471350-60	CERAMIC CAP. 470 PF 50V +-10% (SL TYPE)	6	C185,186,191,192,(C901,902
123-471850-10	CERAMIC CAP. 470 PF 2KV +-10% MATSUSHITA	1	C426
123-472550-90	CERAMIC CAP. 0.0047 MFD 500V +-10% (B TYPE)	1	C501
123-472552-90	CERAMIC CAP. 0.0047 MFD 500V +-10% (B TYPE)	5	C904,903,906,928,929
123-472552-95	CERAMIC CAP. 0.0047 MFD 500V +-10% (B TYPE)	2	C424,425
123-820340-60	CERAMIC CAP. 82 PF 50V +-5% (SL TYPE)	1	C154
123-821850-10	CERAMIC CAP. 820 PF 2KV +-10% (SL TYPE) MA	1	C913
126-103071-01	MYLAR CAP. 0.01 MFD 50V +-10% ***AUDIO NO	3	C210,211,412
126-104060-21	METALIZED POLYESTER FILM CAP. 0.1 MFD 63	11	C135,217,402,411,429,911,11
126-104101-35	POLYPROPYLENE CAP. 0.1 MFD 100V +-10% "X	1	C122
126-153071-01	MYLAR CAP. 0.015 MFD 50V +-10% ***AUDIO NC	1	C973
126-153630-32	POLYPROPYLENE CAP. 0.015 MFD 630V +-5% "	1	C409
126-154071-01	MYLAR CAP. 0.15 MFD 50V +-10% ***AUDIO NO	1	C131
126-223071-01	MYLAR CAP. 0.022 MFD 50V +-10%	3	C214,215,413
126-223401-35	POLYPROPYLENE CAP. 0.022 MFD 400V +-10%	1	C416
126-332071-01	MYLAR CAP. 0.0033 MFD 50V +-10 % ***AUDIO N	2	C115,136
126-333071-01	MYLAR CAP. 0.033 MFD 50V +-10% ***AUDIO NC	2	C907,155
126-334071-01	MYLAR CAP. 0.33 MFD 50V +-10% ***AUDIO NO	2	W130,131
126-364211-31	POLYPROPYLENE CAP. 0.36 MFD 250V +-10%	1	C408
126-472071-01	MYLAR CAP. 0.0047 MFD 50V +-10% ***AUDIO N	3	C128,130,150
126-472201-41	METALLIZED POLYPROPYLENE CAP. 0.0047 MF	2	C414,415
126-473071-01	MYLAR CAP. 0.047 MFD 50V +-10% ***AUDIO NC	1	C148
126-473201-35	POLYPROPYLENE CAP. 0.047 MFD 200V +-10%	1	C419
126-474060-25	METALIZED POLYESTER FILM CAP. 0.47 MFD 6	23	C104-106,182,195,207,187,04
127-105072-03	ELECT. CAP. 1 MFD 50V +-20%	1	C166

PART NUMBER DESCRIPTION QTY LOCATION

127-105072-06	ELECT CAP. 1 MFD 50V +-20% {TAPING TYPE}	10	C107-109,129,157,200,201,22
127-105132-07	ELECT CAP. 1 MFD 160V +-20% "NICHICON"	1	C976
127-106042-06	ELECT CAP. 10 MFD 16V +-20% {TAPING TYPE}	8	C156,158,162,140,169,233,23
127-106072-03	ELECT. CAP. 10 MFD 50V +-20%	2	C116,509
127-106104-03	ELECT CAP. 10 MFD 100V +-20% 105øC	1	C908
127-106252-08	ELECT CAP. 10 MFD 250V +-20% "JAMICON"	1	C502
127-106402-0H	ELECT CAP. 10 MFD 400V +-20% "SHENZHEN JI	1	C971
127-107042-03	ELECT. CAP. 100 MFD 16V +-20%	8	C111,118,132,134,190,193,19
127-107062-08	ELECT CAP. 100 MFD 35V +-20% "JAMICON"	1	C213
127-107132-07	ELECT. CAP. 100 MFD 160V +-20% "NICHICON"	2	C420,926
127-108052-03	ELECT. CAP. 1000 MFD 25V +-20%	2	C430,927
127-225072-06	ELECT CAP. 2.2 MFD 50V +-20% {TAPING TYPE}	5	C114,143,212,223,224
127-226042-06	ELECT CAP. 22 MFD 16V +-20% {TAPING TYPE}	1	C127
127-226252-08	ELECT CAP. 22 MFD 250V +-20% "JAMICON"	1	C433
127-227042-03	ELECT. CAP. 220 MFD 16V +-20%	6	C222,231,422,423,435,01
127-227052-06	ELECT CAP. 220 MFD 25V +-20% {TAPING TYPE}	1	C975
127-227062-08	ELECT CAP. 220 MFD 35V +-20% "JAMICON"	3	C403,427,507
127-227422-07	ELECT CAP. 220 MFD 420V +-20% "NICHICON"	1	C905
127-228052-03	ELECT. CAP. 2200 MFD 25V +-20%	1	C216
127-228052-0D	ELECT CAP. 2200 MFD 25V +-20% 115X25MM "N	1	C930
127-336042-03	ELECT. CAP. 33 MFD 16V +-20%	1	C127A
127-337072-03	ELECT. CAP. 330 MFD 50V +-20%	1	C508
127-475072-06	ELECT CAP. 4.7 MFD 50V +-20% {TAPING TYPE}	2	C404,428
127-475101-2E	ELECT CAP. 4.7 MFD 100V +-10% LOW WASTAG	1	C410
127-475132-03	ELECT CAP 4.7 MFD 160V +-20%	1	C972
127-476042-03	ELECT. CAP. 47 MFD 16V +-20%	3	C110,220,228
127-476094-03	ELECT CAP. 47 MFD 63V +-20% 105øC	1	C910
127-477052-03	ELECT. CAP. 470 MFD 25V +-20%	2	C218,219
130-134004-00	RECTIFIER DIODE IN4004	4	D971,972,973,974
130-134148-01	SILICON DIODE IN4148	17	D101-104,106-111,114-116,50
130-240809-50	VERIABLE CAPACITANCE DIODE BB809	2	D112-113
130-310021-00	RECTIFIER DIODE EGIZ SANKEN	3	D970,975,976
130-310021-50	RECTIFIER DIODE BAV21 PHILIPS {TAPING}	4	D501,502,503,414
130-310228-50	DAMPER DIODE BY228 "PHILIPS" {TAPING}	1	D402
130-310345-00	RECTIFIER DIODE 3JH45 TOSHIBA 3.0A 600V	2	D401,906
130-310406-00	BRIDGE RECTIFIER RBV-406 SANKEN	1	BR901
130-314004-00	RECTIFIER DIODEN 1N4004	1	D512
130-315295-00	RECTIFIER DIODE S5295G TOSHIBA	10	D403-407,901,905,909,910,90
130-410036-00	ZENER DIODE 3.6V 1/2W	1	ZD103
130-410039-01	ZENER DIODE 3.9V {TAPING}	1	ZD901
130-410056-01	ZENER DIODE 5.6V {TAPING}	1	ZD902
130-410068-01	ZENER DIODE 6.8V 1/2W +-5% {TAPING}	1	ZD503
130-410082-01	ZENER DIODE 8.2V {TAPING}	2	ZD102,903
130-410120-01	ZENER DIODE 12V 1/2W +-5% {TAPING} "TEMIC	1	ZD504
130-410574-00	ZENER DIODE UPC 574J NEC	1	ZD401
130-420091-U0	ZENER DIODE 9.1V 1W +-5% "RUGAO DACHAN	3	ZD403,904,01
130-610605-00	LED 5MM ROUND (RED/GREEN) BT605 "FOSHA	1	(LED601 ON SENSOR P.C.B.
131-210719-29	TRANSISTOR 2SA719R/S MATSUSHITA	1	Q971
131-211015-00	TRANSISTOR 2SA1015 TOSHIBA	9	Q102-105,110,111,113,502,50
131-220774-20	TRANSISTOR 2SB774/Q/R/S {TAPING} MATSUS	1	Q911
131-220940-16	TRANSISTOR 2SB940P	1	Q401
131-231815-0A	TRANSISTOR 2SC1815 TOSHIBA {TAPING}	8	Q106,108,117,119,910,912,50
131-232335-30	TRANSISTOR 2SC2335 L/K NEC	1	Q970
131-232482-0A	TRANSISTOR 2SC2482 TOSHIBA {TAPING}	1	Q402
131-233619-00	TRANSISTOR 2SC3619	1	Q404
131-234706-00	TRANSISTOR 2SC4706 SHIN HO	1	Q909

PART NUMBER DESCRIPTION QTY LOCATION

131-240400-00	TRANSISTOR 2SD400E/F SANYO	1	Q913
131-241761-00	TRANSISTOR 2SD1761(E) ROHM	1	Q405
131-462369-0A	TRANSISTOR PH2369 PHILIPS {TAPING}	1	Q101
133-101219-14	I.C. TA1219AN I2C AV SELECTOR "TOSHIBA"	1	IC01
133-101501-33	I.C. TEA1501 PHILIPS	1	IC970
133-103857-33	IC TDA3857 PHILIPS	1	IC109
133-108354-33	I.C. TDA8354Q/N1 PHILIPS	1	IC401
133-108598-33	I.C. PCF8598C-2 PHILIPS	1	IC103
133-109870-33	I.C. TDA9870A DIGITAL TV SOUND PROCESSOR	1	IC107
133-116107-33	I.C. TDA6107Q/N2 (IMPROVEMENT) PHILIPS	1	IC501
133-133722-12	I.C. M37221M8-144SP (MASKED CHIP) "MITSUBI	1	IC102
133-202615-33	IC TDA2615 (PHILIPS)	1	IC108
133-304241-31	I.C. M74HCT241B1 SGS	1	IC104
133-507808-61	I.C. KA7808 SAMSUNG	1	IC402
133-517805-61	I.C. KA7805 SAMSUNG	2	IC403,404
136-504251-00	REMOTE CONTROL RECEIVER SPS-425-1G SA	1	(OPT601 ON SENSOR P.C.B.
137-245760-31	CRYSTAL 24.576 MHZ 20PF "ZHUHAI HOPE"	1	X105
137-357954-20	CRYSTAL 3.579545 MHZ "KOWHA"	1	X102
137-443619-26	CRYSTAL 4.433619 MHZ 20PF +-30PPM "JIANG	1	X101
137-800000-20	CRYSTAL 8.0 MHZ KITRONICS	1	X103
146-104112-01	TACT SWITCH 4 PIN L=8.35 100G #1102VC-4 "PI	7	S601-607 (ON FUNCTION BC
160-101001-08	PIN CONNECTOR 1 PIN PLUG STRAIGHT	3	CN501,901,902
160-102255-27	PIN CONNECTOR 2 PINS PLUG STRAIGHT (UL)	4	CN02,107,108,111
160-102805-08	PIN CONNECTOR 2 PIN PLUG STRAIGHT	1	J903
160-103255-27	PIN CONNECTOR 3 PINS PLUG	4	CN106,105,110,103
160-103805-08	PIN CONNECTOR 3 PIN PLUG STRAIGHT	2	CN403,402
160-104254-27	PIN CONNECTOR 4 PINS PLUG (ANGLE TYPE)	1	J903
160-104255-27	PIN CONNECTOR 4 PINS PLUG (SHS)	3	CN113,404,07
160-104805-08	PIN CONNECTOR 4 PIN PLUG STRAIGHT	1	CN401
160-105255-27	PIN CONNECTOR 5 PINS WAFER 2.5 PITCH	3	CN05,104,114
160-106255-27	PIN CONNECTOR 6 PINS WAFER (SHS) S11-W	1	CN101
160-108255-27	PIN CONNECTOR 8 PINS PLUG	2	CN109,J904
160-109255-27	PIN CONNECTOR 9 PINS PLUG	2	CN01,112
161-300802-00	DIN SOCKET TDQ-3B8P "CONIC"	1	J13
161-470015-05	RCA JACK 2 PIN IS-98050106 WHITE "YUEN HIN	2	J08,11
161-472003-04	RCA JACK 2 PIN YELLOW AV-8.4-2 "SHENZHEN	2	J10,07
161-473204-00	RCA JACK 3 PIN UIC-032-04AR RED "UNITRONI	2	J09,J12
161-481105-32	RF CONNECTOR UIC-0421-01-010A CHINA LANI	1	FOR ANT INPUT
161-682102-22	21 PIN SCART SOCKET	1	J901
172-620010-40	UL 1007 TOP COAT WIRE AWG 20 100MM BLAC	1	FOR CN02 PIN `2' TO ANT IN
172-620020-40	UL 1007 TOP COAT WIRE AWG 20 200MM BLAC	1	FOR TUNER TO ANT INPUT
172-626008-40	UL 1007 TOP COAT WIRE AWG26 80MM BLACK	3	Q909 LUG TO POWER PCB `
172-626008-40	UL 1007 TOP COAT WIRE AWG26 80MM BLACK	0	FOR MAIN PCB `B'TO`B'
172-626016-40	UL 1007 TOP COAT WIRE AWG 26 160MM BLAC	1	FOR MAIN PCB `C'TO`C'
172-626020-40	UL 1007 TOP COAT WIRE AWG 26 200MM	1	FOR MAIN PCB `A'TO`A'
172-726000-99	BARE WIRE 54MM	10.2	W21,22,23,101-111,113-119,1
172-726000-99	BARE WIRE 54MM	0	W145-150,153-174,176-194,1
172-726000-99	BARE WIRE 54MM	0	W245-254,256-268,281,289,2
172-726000-99	BARE WIRE 54MM	0.11	W01-04,06-14,222,(W601 ON
172-726000-99	BARE WIRE 54MM	0	(W601-604 ON SENSOR BOA
172-726000-99	BARE WIRE 54MM	0	(W901,906,907,909 ON POW
172-726000-99	BARE WIRE 54MM	0.16	D195,413,511,ZD502,FB403,F
172-726000-99	BARE WIRE 54MM	0	R04,138,154,183,194,196,430
172-830120-99	FLAT BRIDED WIRE	2.7	CRT GROUND
179-001010-00	OIL SLEEVING 1 mm DIA.	0.06	20MM FOR D906,10MM-C907
179-105000-00	UL PVC TUBE 5mm DIA	0.2	FOR CN901,902

PART NUMBER DESCRIPTION QTY LOCATION

179-105000-00	UL PVC TUBE 5mm DIA	1.4	700MM FOR LEFT SPK.,700M
179-107300-00	UL PVC TUBE 7.3MM DIA.	0.22	220MM FOR DOUBLE INSOL
179-110500-00	UL PVC TUBE 11MM DIA.	0.45	50MM FOR AC LINE CORD, 4
179-403030-00	3MM DIA. SHRINKABLE TUBE	0.07	70MM FOR AC LINE CORD
184-350805-08	AXIAL LEAD BEAD INDUCTORS "COILS"	5	FB101,102,401,402,901
190-382901-04	POWER SWITCH PCB(180900)	1	
190-382901-10	SENSOR P.C.B(300999)	1	
190-382904-P0	CRT PCB (27042000)	1	
190-382914-P6	CHANNEL P.C.B. (20032001)	1	
190-733A13-P8	AV P.C.B (261099)	1	
190-829B03-08	21 PIN SOCKET P.C.B.(230600)	1	
190-932908-07	POWER P.C.B. (28122000)	1	
190-932912-P1	MAIN P.C.B. (09022001)	1	
191-101007-10	1 PIN SOCKET ASS'Y L=350MM (DOUBLE INSOL	1	FOR CN501 TO CRT GND
191-201234-10	2 PIN SOFT WIRE L=350MM(1 SIDE SOCKET,1 S	1	FROM CN111 TO POWER PC
191-201240-10	2 PIN L=340MM #26 UL1185 (W/SINGLE SHIELD	1	CN108 TO CN02
191-301036-07	3 PIN SOCKET ASS'Y L=480MM	1	CN403 TO POWER BOARD F
191-301036-07	3 PIN SOCKET ASS'Y L=480MM	0	'3' TO '6'
191-301067-10	3 PIN L=350MM #22 UL1672 (2 WIRE) STV8-3H	1	CN402 TO POWER BOARD F
191-301271-10	3 PIN FLAT CABLE L=500MM AWG26 UL2468 (S	2	1-CN105 TO CN04,CN103 TC
191-301272-10	3 PIN FLAT CABLE L=340MM AWG26 UL2468 (S	1	CN110 TO CN06
191-401025-10	4 PIN SOCKET ASS'Y L=450MM (FLAT CABLE) U	1	CN404 TO CRT BOARD PIN`
191-401025-10	4 PIN SOCKET ASS'Y L=450MM (FLAT CABLE) U	0	'3' TO `GND', `4' TO `180V'
191-401231-10	4 PIN FLAT CABLE L=300MM AWG26 UL2468 (S	1	CN113 TO FUNCTION PCB C
191-401231-10	4 PIN FLAT CABLE L=300MM AWG26 UL2468 (S	0	'3'TO`3', `4'TO`4'
191-401232-10	4 PIN L=220MM AWG26 UL1185 W/ TRIPLE SHIE	1	CN07 TO J903
191-401238-10	4 PIN FLAT CABLE L=550MM (1 SIDE CONNECT	1	CN07 TO FUNCTION PCB CN
191-401238-10	4 PIN FLAT CABLE L=550MM (1 SIDE CONNECT	0	'3'TO`3', `4'TO`4'
191-501026-10	5 PIN SOCKET ASS'Y L=480MM (FLAT CABLE)	1	FOR CN104 TO CN03A
191-501040-10	5 PIN FLAT CABLE L=250MM AWG26 UL2468 (S	1	CN114 TO SENSOR PCB CN
191-501040-10	5 PIN FLAT CABLE L=250MM AWG26 UL2468 (S	0	'3'TO`3', `4'TO`4', `5'TO`5'
191-601009-10	6 PIN SOCKET ASS'Y L=450MM (W/FLAT CABLE	1	CN101 PIN `1'TO`A', `2'TO`H'
191-601009-10	6 PIN SOCKET ASS'Y L=450MM (W/FLAT CABLE	0	'5'TO`E', `6'TO`F'
191-801225-10	8 PIN L=400MM #26 UL2468 (P1-4 ,6,7 FLAT CAB	1	CN109 TO J904
191-901214-10	9 PIN 340MM #26 UL2468 P1-3 FL AT CABLE,P4-	1	CN112 TO CN01
402-522001-11	COAXIAL CABLE W/DIN, RCA 250MM W/3 SOLD	1	FOR TUNER TO RF CONNEC
504-305005-10	MACHINE SCREW 3 X 5 B/M	2	FOR POWER SWITCH TO 72
514-400312-10	SELF-TAPPING SCREW 4 X 12 B/A (HARDEN)	1	FOR FBT
515-303408-10	SELF-TAPPING SCREW 3 X 8 W/B/T (HARDEN)	3	1 FOR 750-063102-01 MTG.,
515-303410-10	SELF-TAPPING SCREW 3 X 10 W/B/T (HARDEN)	18	8-POWRE PCB,2-JACK PALT
515-303410-10	SELF-TAPPING SCREW 3 X 10 W/B/T (HARDEN)	0	2-IC401, 1-IC402, 1-IC403, 1-0
515-303410-10	SELF-TAPPING SCREW 3 X 10 W/B/T (HARDEN)	2	FOR 781-382905-00 TO 781-3
515-303412-10	SELF-TAPPING SCREW 3 X 12 W/B/T (HARDEN)	15	13 FOR MAIN PCB, 2 FOR 72
516-300410-10	SELF-TAPPING SCREW 3 X 10 P/T (HARDEN)	6	FOR AV BOARD
517-303312-10	SELF-TAPPING SCREW 3 X 12 W/A W/H=7MM (H	2	1 FOR Q909, 1 FOR BR901
518-300308-20	SELF - TAPPING SCREW 3X8 B/T COARSE GRO	3	1 FOR IC404, 1 FOR IC501, 1
540-020030-01	EYELET 2 X 3 MM	28	4-L901,4-L905,3-T402 `1`,`5`,`
540-020030-01	EYELET 2 X 3 MM	0	2-C408,1-Q403 `C',2-L402,4 F
540-020030-01	EYELET 2 X 3 MM	0	2-R970,2-R971
580-101004-04	TWIST LOCK SUPPORTS "KANGLI"	1	FOR CN403
580-101261-01	CABLE TIE L=100MM	1	1-CN403
580-101261-01	CABLE TIE L=100MM	3	
661-932501-01	FUSE LABEL - ATAKI DESIGN (T4A/250V)	1	
723-932002-00	POWER SWITCH BRACKET (NEW) FOR POWER	1	FOR POWER SWITCH ADAP
750-063101-00	SOLDERING LUG LEG:8X4MM	2	FOR Q403,Q909
750-063102-01	35MM SOLDERING LUG OD:7 ID:3.2 LEG:4X35M	4	FOR AC LINE CORD



PART NUMBER DESCRIPTION QTY LOCATION

766-686801-00	FUSE HOLDER	2	F901
779-882001-01	IRON HEAT SINK (D)	1	FOR IC404
779-882803-02	IRON HEAT SINK	1	IC108
779-882803-03	IRON HEAT SINK {NEW}	1	IC501
781-382903-07	ALUMINUM HEAT SINK	1	FOR IC401,402,403,Q403,401
781-382905-00	ALUMINUM HEAT SINK	1	FOR 781-382903-07
781-932503-00	ALUMINIUM HEAT SINK	1	FOR 781-932912-00
781-932912-00	POWER PCB HEAT SINK (O)	1	FOR Q909,BR9001
783-931304-02	SHIELD CAN	1	
783-931305-06	SHIELD CAN COVER "NEW"	1	
920-733A26-U0	CHASSIS MTG BKT BLACK HIPS UL94V0 W/O T	1	
929-282903-00	LED BRACKET	1	
954-882804-00	HIGH VOLTAGE CABLE SPACER	3	FOR FBT. MTG.
001-229085-13	FLYBACK (DOUBLE FOCUS PURE FLAT) BSC28	1	# T402
101-288270-95	LINE FILTER LB28T270	2	# L901,905
101-288280-95	LINE FILTER 50MH FOR 28"	0	# L901,905
113-565210-99	CARBON COMPOSITION RES. 5.6M OHM 1/2W -	2	# R948,921
113-688305-42	FUSING RESISTOR 0.68 OHM 1W +-5%	2	# R421,915
113-688305-49	FUSING RESISTOR 0.68 OHM 1W +-5% "KOA"	0	# R421,915
114-210262-00	THERMISTOR PTH451C262B	0	# TH901
114-210270-02	THERMISTOR 18 OHM 270V #2322 662 96524 "P	0	# TH901
114-210270-12	THERMISTOR 18 OHM 276V #2322 662 96724 "P	1	# TH901
114-210290-00	THERMISTOR 18 OHM +-20% #PTH451C234BG1	0	# TH901
123-222466-47	CERAMIC CAP. 0.0022 MFD 400VAC +-20% W/IE	0	# C917
123-222466-50	CERAMIC CAP. 0.0022 MFD 400VAC +-20% ECK	1	# C917
123-222466-51	CERAMIC CAP. 0.0022 MFD 400V +-20% W/IEC 3	0	# C917
126-473222-41	METALIZED POLYPROPYLENE CAP. 0.047 MFD	2	# C980,970
126-473222-45	METALIZED POLY.CAP. 0.047 MFD 275VAC +-20	0	# C980,970
126-474222-45	METALIZED POLY.CAP. 0.47 MFD 275VAC +-20%	1	# C901
126-474222-45	METALIZED POLY.CAP. 0.47 MFD 275VAC +-20%	0	# C901
146-100001-14	POWER SWITCH (ESB-99957S COST COST REI	0	#
146-100006-14	POWER SWITCH PS5E-B "CHINA LANDMARK"	1	#
161-540402-00	CRT SOCKET GZS10-2-402 "SHENZHEN DUNING	1	# SK501
182-224000-03	FUSE T4A 250V	1	# F901
182-224000-23	FUSE T4A/250V 5 X 20 MM TIME- LAG #50T040H	0	# F901
182-224000-33	FUSE 4A/250V 5 X 20MM SLO-BLO #218004 LITI	0	# F901
191-101022-10	1 PIN DOUBLE INSOLATION WIRE #18 UL1672 L	1	# FROM POWER SWITCH TO
191-101021-10	1 PIN DOUBLE INSOLATION WIRE #18 UL1672 L	1	# FROM POWER SWITCH TO
101-493260-94	SWITCHING POWER TRANSFORMER KB493260	1	# T901
113-688405-42	FUSEBLE RESISTOR 0.68 2W +-5%	3	# R424,425,426
131-242553-00	TRANSISTOR 2SD2553 TOSHIBA	1	# Q403
509-305010-00	MACHINE SCREW 3 X 10 KM (BLACK)	2	FOR JACK PLATE
514-300408-10	SELF-TAPPING SCREW 3 X 8 B/T (HARDEN)	2	2 FOR LED PCB
514-400410-10	SELF - TAPPING SCREW 4 X 10 B/T (HARDEN)	8	FOR SPK.MTG
514-400425-10	SELF-TAPPING SCREW 4 X 25 B/T (HARDEN)	9	FOR CABINET MTG
516-500418-10	SELF-TAPPING SCREW 5 X 18 P/T (HARDEN) HI	4	FOR SPEAKER HOLDER MTG
524-382903-00	CRT MTG.SCREW i6X30MM	4	FOR CRT MTG
580-101261-01	CABLE TIE L=100MM	9	FOR DEGAUSSING COIL
580-101261-01	CABLE TIE L=100MM	3	2-SPEAKER WIRE FIXING,1-
580-102261-00	CABLE TIE L=200MM W=2.5MM	2	FOR DEGUASSIJNG COIL
580-103261-00	CABLE TIE L=300MM W=3.5MM	6	FOR DEGAUSSING COIL
622-733B01-00	PAD CORD L240 X W10 X TO.5MM W/TAPE	10	6 FOR FRONT CAB. & L.CRT
622-882802-00	FELT L240 X W17 X TO.5MM W/TAPE	9	FOR BACK CAB. & OTHER P
630-114520-00	FIBRE WASHER	2	FOR REMOTE PCB
630-238010-00	FIBRE WASHER OD=23 , ID=8 T=1MM	8	FOR RCA CRT MTG
631-282901-00	FIBRE COVER (BLACK)	1	FOR BACK CAB.



PART NUMBER

DESCRIPTION

QTY

LOCATION

B)

B)

B)

EETER SPK. `+'

UNCTION PCB)

D  
D  
D

EETOR SPK. `+'

EETOR SPK. `-'

PART NUMBER	DESCRIPTION	QTY	LOCATION
30,C335,C336			
	FUNCTION PCB PIN `1'TO`J'		
	1'TO`+', `2'TO`-'		
	TO`+', `2'TO`-'		
	CTI PCB CN331 PIN `1'TO`1'		
	CTI PCB CN332 PIN `1'TO`1'		
	FUNCTION PCB PIN `1'TO`F'		
	CTI PCB CN330 PIN `1'TO`1'		
	COVER		
	., 2 FOR CTI PCB.		
	COVER		

PART NUMBER

DESCRIPTION

QTY

LOCATION

17,198,208-211,114  
18,402,278,152  
C.B.)

;

PART NUMBER

DESCRIPTION

QTY

LOCATION

13

13,200,199

INCTION PCB)

;

PART NUMBER	DESCRIPTION	QTY	LOCATION
-------------	-------------	-----	----------

68,169 'CB)			
----------------	--	--	--

7-32 i2,153			
----------------	--	--	--

i,159			
-------	--	--	--

ON SCART PCB)			
---------------	--	--	--

2,208,209,201,451			
-------------------	--	--	--

I,05,07-17,20,23,21			
---------------------	--	--	--

PART NUMBER	DESCRIPTION	QTY	LOCATION
-------------	-------------	-----	----------

27,421,506

10,142

14,431

17,508,509,510

12

)

14

13,109



PART NUMBER	DESCRIPTION	QTY	LOCATION
-------------	-------------	-----	----------

.)

WARD)

INPUT GND  
 GND  
 Z',Q403 LUG TO MAIN PCB `K'

121-127,129,132-143  
 96-207,210-220,224-243  
 93-294,307,501-503  
 FUNCTION PCB)  
 \RD),(W901,902 ON SCART PCB)  
 ER PCB)  
 =B404  
 ),431,511,521,515  
 7, 30MM-R427

PART NUMBER	DESCRIPTION	QTY	LOCATION
-------------	-------------	-----	----------

MM FOR RIGHT SPK.  
 .ATION WIRE  
 400MM FOR WIRE

DB PIN `1'TO`8',`2'TO`7'

PIN `1' TO `4',`2' TO `5'

PIN `2' TO `1',`3' TO `2'  
 ) J905

`1' TO `FF',`2' TO `GND',

AN603 PIN `1'TO`1', `2'TO`2'

N604, `1'TO`1', `2'TO`2'

602 PIN `1'TO`1', `2'TO`2'

, `3'TO`C', `4'TO`D'

CTOR  
 23-932002-00

2 FOR 161-682102-22 MTG.  
 TE,2 FOR 781-932503-00  
 Q403, 1-Q401  
 382903-07 MTG  
 23-932002-00 TO F.CAB.

FOR IC108  
 10',2-L401,2-R416,  
 FOR POWER SWITCH BOARD

CTOR

PART NUMBER

DESCRIPTION

QTY

LOCATION

I

∩ CN901 ON POWER PCB  
∩ CN902 ON POWER PCB

G

SPK.WIRE

; 4 FOR SPK. HOLDER  
ARTS

PART NUMBER

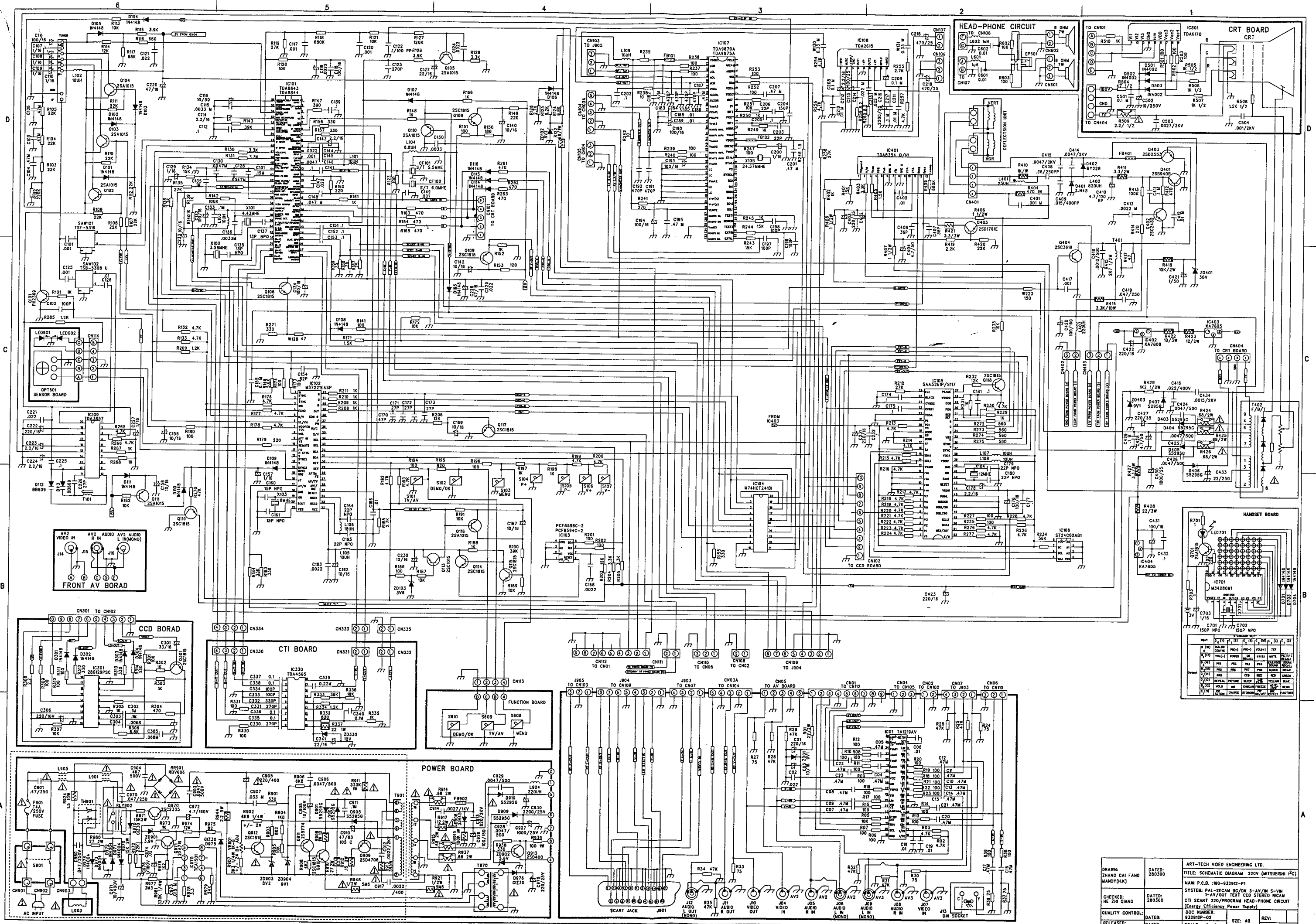
DESCRIPTION

QTY

LOCATION

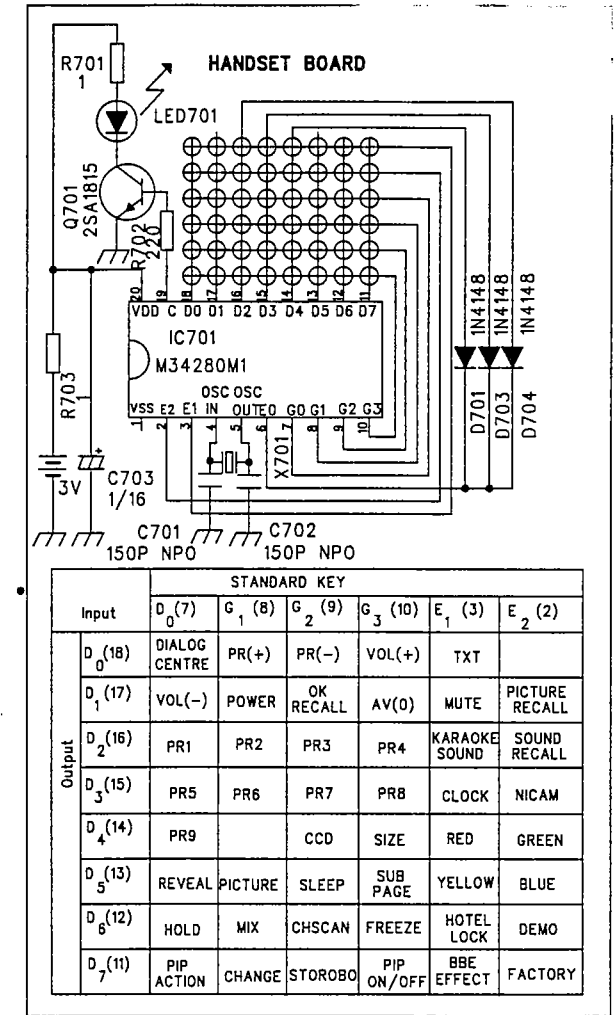
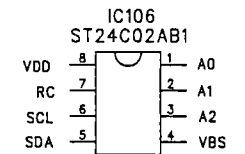
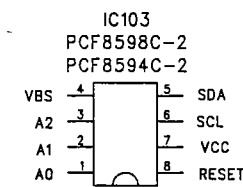
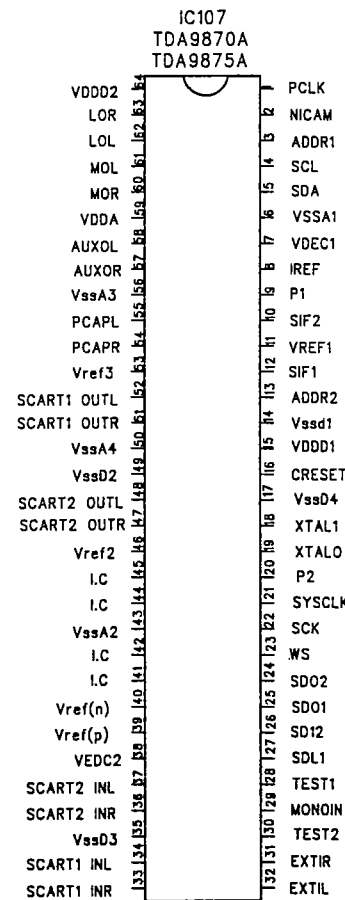
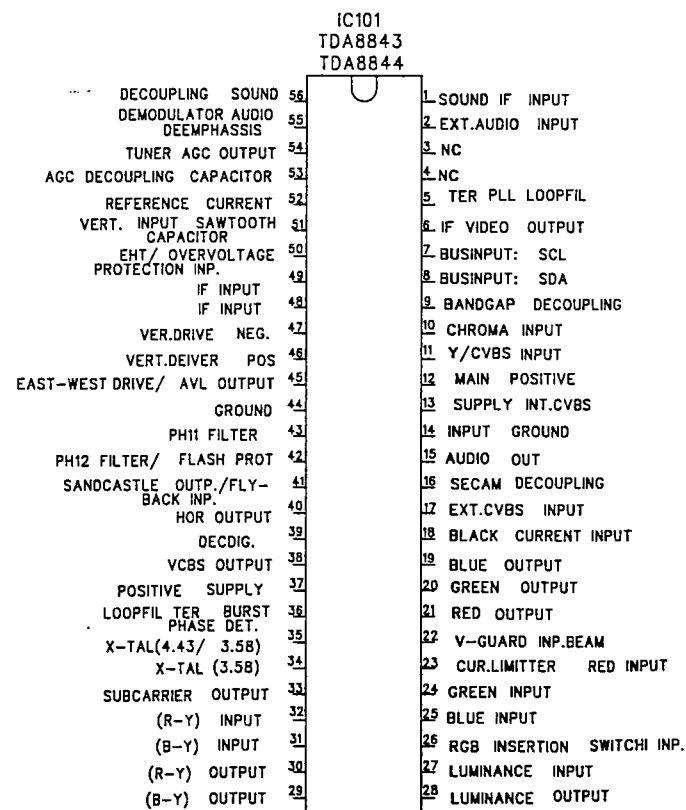
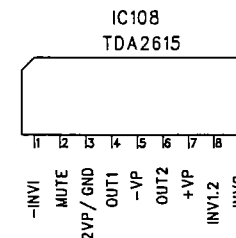
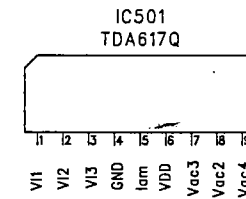
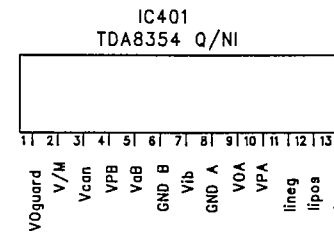
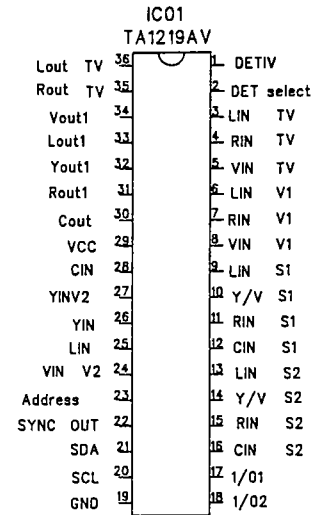
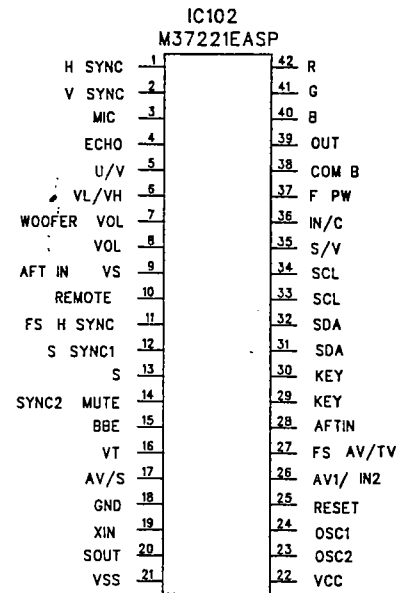
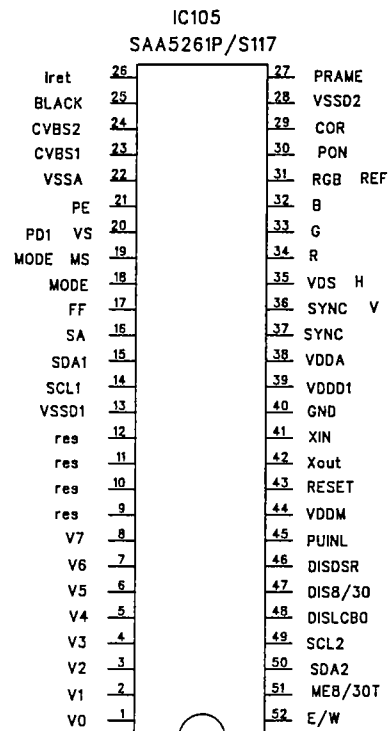
3

LDER  
RT,4 BETWEEN FRONT CAB & CRT  
\BINET AND CRT UP-SIDE  
DR SPK HOLDER

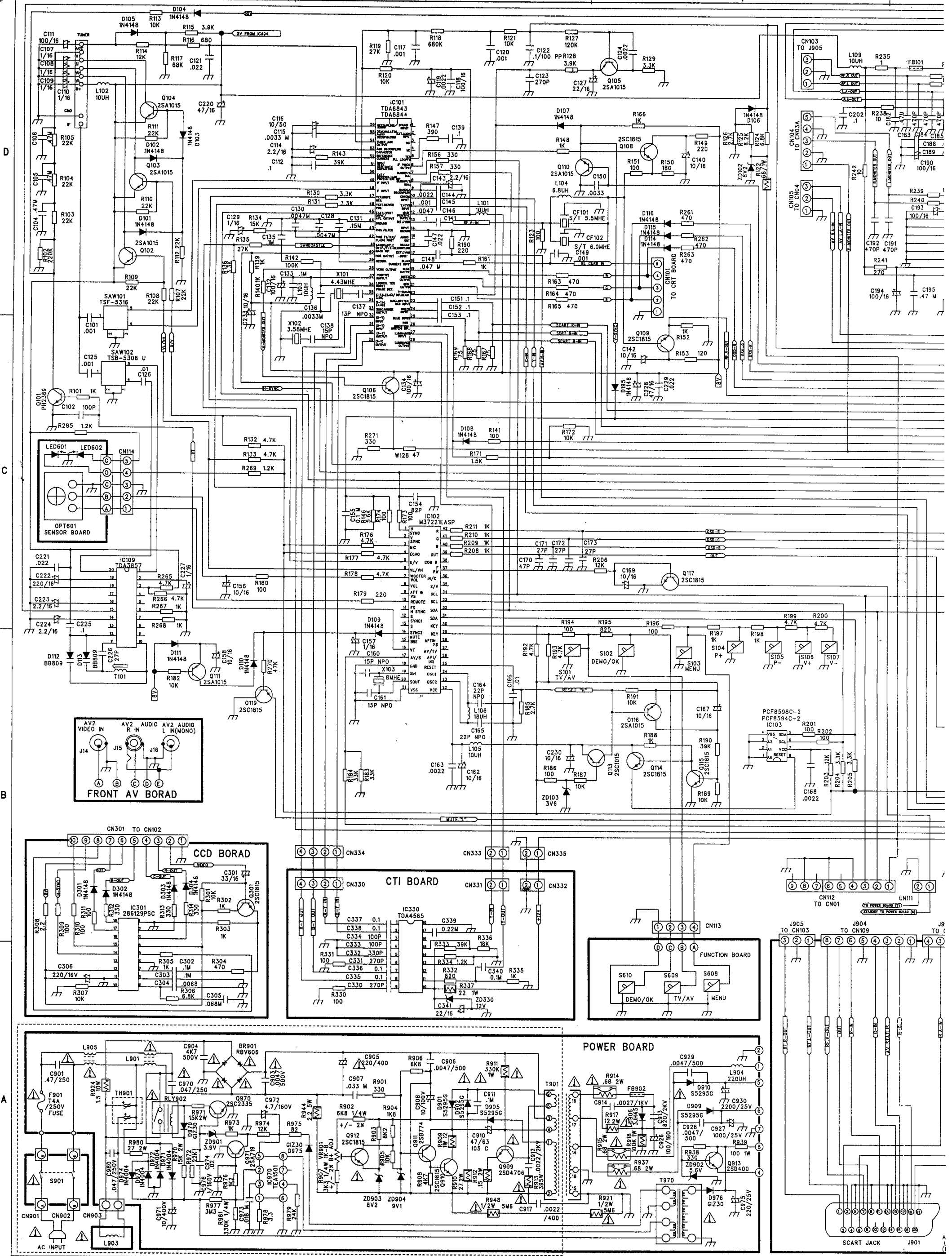


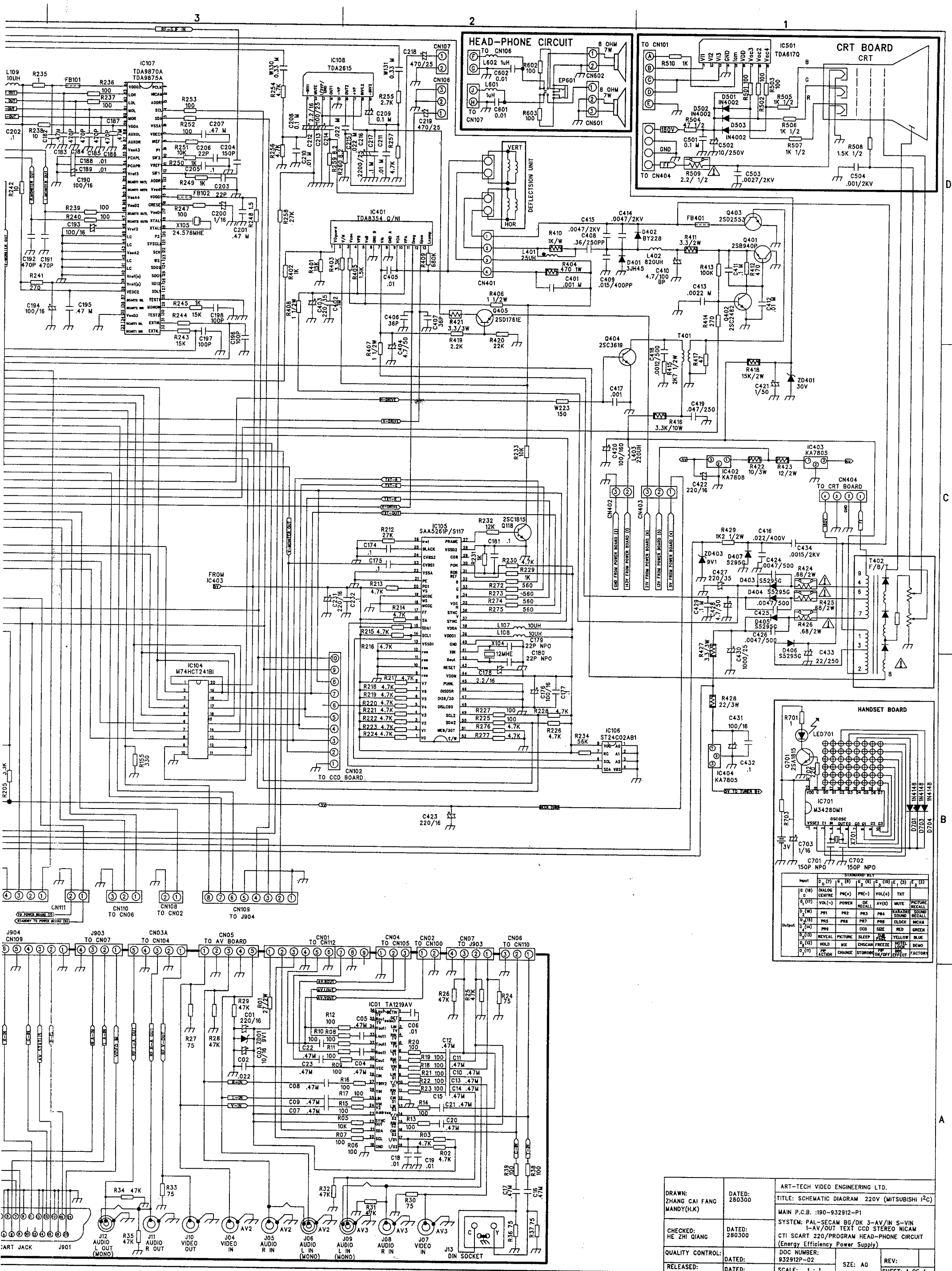
DRAWN: ZHANG CAI FANG MANDY(HX)	DATED: 280300	ART-TECH VIDEO ENGINEERING LTD.
CHECKED: HE ZHI QIANG	DATED: 280300	TITLE: SCHEMATIC DIAGRAM 220V (MITSUBISHI VCR)
QUALITY CONTROL: RELEASED:	DATED: RELEASED:	MAIN P.C.B.: 160-93292-P1 SYSTEM: PAL-SECAM BG/DK 3-AV/M 5-VIN S.P. SYSTEM: 220V/PROGRAM HEAD-PHONE CIRCUIT (Energy Efficiency Power Supply)
		DOC NUMBER: 93292P-02
		SCALE: 1 : 1
		REV: SHEET: 1 OF 1

IC701	1	TEST
IC701	2	TEST
IC701	3	TEST
IC701	4	TEST
IC701	5	TEST
IC701	6	TEST
IC701	7	TEST
IC701	8	TEST
IC701	9	TEST
IC701	10	TEST
IC701	11	TEST
IC701	12	TEST
IC701	13	TEST
IC701	14	TEST
IC701	15	TEST
IC701	16	TEST
IC701	17	TEST
IC701	18	TEST
IC701	19	TEST
IC701	20	TEST
IC701	21	TEST
IC701	22	TEST
IC701	23	TEST
IC701	24	TEST
IC701	25	TEST
IC701	26	TEST
IC701	27	TEST
IC701	28	TEST
IC701	29	TEST
IC701	30	TEST
IC701	31	TEST
IC701	32	TEST
IC701	33	TEST
IC701	34	TEST
IC701	35	TEST
IC701	36	TEST
IC701	37	TEST
IC701	38	TEST
IC701	39	TEST
IC701	40	TEST
IC701	41	TEST
IC701	42	TEST
IC701	43	TEST
IC701	44	TEST
IC701	45	TEST
IC701	46	TEST
IC701	47	TEST
IC701	48	TEST
IC701	49	TEST
IC701	50	TEST
IC701	51	TEST
IC701	52	TEST
IC701	53	TEST
IC701	54	TEST
IC701	55	TEST
IC701	56	TEST
IC701	57	TEST
IC701	58	TEST
IC701	59	TEST
IC701	60	TEST
IC701	61	TEST
IC701	62	TEST
IC701	63	TEST
IC701	64	TEST
IC701	65	TEST
IC701	66	TEST
IC701	67	TEST
IC701	68	TEST
IC701	69	TEST
IC701	70	TEST
IC701	71	TEST
IC701	72	TEST
IC701	73	TEST
IC701	74	TEST
IC701	75	TEST
IC701	76	TEST
IC701	77	TEST
IC701	78	TEST
IC701	79	TEST
IC701	80	TEST
IC701	81	TEST
IC701	82	TEST
IC701	83	TEST
IC701	84	TEST
IC701	85	TEST
IC701	86	TEST
IC701	87	TEST
IC701	88	TEST
IC701	89	TEST
IC701	90	TEST
IC701	91	TEST
IC701	92	TEST
IC701	93	TEST
IC701	94	TEST
IC701	95	TEST
IC701	96	TEST
IC701	97	TEST
IC701	98	TEST
IC701	99	TEST
IC701	100	TEST



DRAWN: ZHANG CAI FANG MANDY(H.K)	DATED: 181299	ART-TECH VIDEO ENGINEERING LTD.	
CHECKED: HE ZHI QIANG	DATED:	TITLE: SCHEMATIC DIAGRAM MAIN P.C.B.: 190-932912-P1 P/N: 692-3829MB-01 SYSTEM: IC CIRCUIT	
QUALITY CONTROL:	DATED:	DOC NUMBER: 932912P-01	REV:
RELEASED:	DATED:	SCALE: 1 : 1	SIZE: A0 SHEET: 1 OF 1





Input	D (7)	E (8)	F (9)	G (10)	H (11)	I (12)
D (18)	DIALOG	PR(+)	PR(-)	VOL(+)	TXT	
D (19)	CENTRE					
D (20)	VOL(-)	POWER	SK	RECALL		
D (21)	PR1	PR2	PR3	PR4	KARAOKE	SOUND
D (22)	PR5	PR6	PR7	PR8	CLOCK	GREEN
D (23)	RECALL	PICTURE	SLEEP	FREEZE	YELLOW	BLUE
D (24)	HOLD	CHK	CHSCAN	FREEZE	LOCK	DEMO
D (25)	PF	ACTION	CHANGE	STORAGE	OFF	EFFECT
D (26)						

DRAWN: ZHANG CAI FANG  
 DATED: 280300  
 MANDY(H.K.)  
 CHECKED: HE ZHI QIANG  
 DATED: 280300  
 QUALITY CONTROL:  
 RELEASED:

ART-TECH VIDEO ENGINEERING LTD.  
 TITLE: SCHEMATIC DIAGRAM 220V (MITSUBISHI i2c)  
 MAIN P.C.B.: 190-932912-P1  
 SYSTEM: PAL-SECAM BC/DK J-AV/IN S-VIN  
 1-AV/OUT TEXT CCD STEREO NICAM  
 CTI SCART 220/PROGRAM HEAD-PHONE CIRCUIT  
 (Energy Efficiency Power Supply)  
 DOC NUMBER:  
 932912P-02  
 SCALE: 1:1  
 REV: 1 OF 1

97-160/01 97-320/01  
 47 100 101